



2008

...

...

...

...

1	
4	
	:
	1.1
11	1.1.1
26	2.1.1
53	2.1
41	3.1
47	4.1
	:
52	1.2
52	1.1.2
57	2.1.2
66	3.1.2
75	2.2
75	1.2.2
82	2.2.2
85	3.2.2
87	4.2.2

	:	
92		1.3
102		2.3
109		3.3
114		4.3
	:	
119		1.4
128		2.4
131		3.4
136		4.4
	:	
143		1.5
145		2.5
146		3.5
148		4.5
149		5.5
150		6.5
151		7.5
152		8.5
154		
158		

2008

:

.

:

.

:

()

.()

Abstract

The syntactical phenomenon in the interpretation of the Quranic construction between al farra and al Akfash Al Awsat in their books "Mani AL Quran "

**Basma Rida al Halameh
Mu'tah university 2008**

This study aims at:spot light on the difference between Al farra and Al akfash if found depending on their books "mani Al quran"

this study discusses the syntactical phenomenon between two leading linguists from al kufa and school and his book " mani Al quran" is considered to be the only book from the kufians.

Al akfash book " mani al quran" is considered to be an original source book of language syntax where he showed his opinions in which he followed Seibawaih and the earlier of the Basrians and also showed his opinions where he agreed with Al farra

This study is composed of a preface, five chapters and a conclusion. The preface includes a talk about the reality of the difference between al farra and Al Akfash. The book has described their books and a brief talk about the nature of difference between the Basrians and the kufians.

The first chapter studies the Quranic patterns that each of them interpreted in their books "mani "al quran , this chapter involved some parts.

The second chapter is about the accusatives the third chapter is about the intensification.

The fourth chapter is about the linguistic techniques these techniques according to al farra and al akfash are devided into some parts.

The last chapter is about the syntactical idiom , it includes atalk about al farra' and al akfash syntactical idiom in their books " mani al quran".

This study has focused on agroup of idioms that are considered leading examples on the difference and agreement between the two linguists the conclusion has showed the most important results that this study has reached Such as:

The difference between al farra' and Al Akhfash is not deep one but in fact it is a difference concerns subsidiaries rather than the origins of syntax. This difference in fact is the difference between the basrians and the kufians. There is no difference in their interpretations of the patterns, they both depend on the same "imperfection" derived from the famous theory" Al a'mal wa Al mamoul " this is aclear example on this result.

.

:

:

() :

:

. -1

. -2

. -3

. -4

:

() :

: -1

. -

. -

. -

:

-2

. -

. -

. -

. -

:

() :

. -1

. -2

. -3

. -4

() :

:

. -1

. -2

. -3

. -4

() :

:

. -1

. -2

. -3

. -4

. -5

. -6

. -7

-8

¹ 211

² 207

3

()

⁴

()

()

.

.

74

230·224/11

- 1

.78·77

100-98

143

- 2

.149/20

.5

- 3

.93·92

- 4

.¹

()

()

.² ()

()

()

.³

()

.⁴ ()

()

.159

- 1

.4443

- 2

.6

- 3

.147

- 4

.1

)

.2 (

.3

.4

	.44	- 1
.12		- 2
	.26	- 3
	.4443	- 4

2

:

1

3

5

4

:

6

7

.

.67	- 1
.72,44,32/1	- 2
.32/1	- 3
.56/1	- 4
.67/1	- 5
.68/1	- 6
.295/2	- 7

.1

.2

)

(

.3

.4

(121)

(56)

.44

- 1

.45

- 2

.13

- 3

.158

- 4

1
.

()

:

: -1

. -

. -

. -

. -

-

: -2

. -

.93

- 1

	.	-	
	.	-	
:			-3
	.	-	
	.	-	
	.	-	
	.	-	
:			-4
	.	-	
	.	-	
	.	-	
	.	-	
	.		-5

:
 . -
 . -
 . -
 . -
 : **1.1**
 : **1.1.1**

. 1

. 2

	.126/2	- 1
4/2		- 2
		.184/1

()

¹ ():

²

()

(())

)

³

⁴
.

⁵ ()

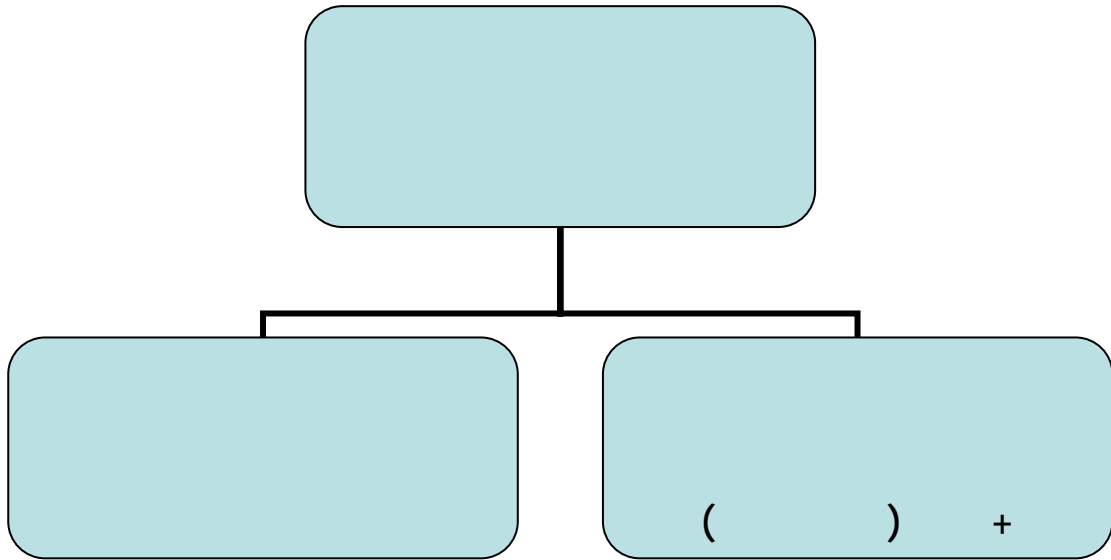
⁶

:

: ()

.39/1 (5)

.2	- 1
.9/1	- 2
	- 3
./1	- 4
.43/1	- 5
.	- 6



()

" ()

.1 "

2

() ()

3

.4 () ():

:

":

.5 "

()

()

()

()

.116

- 1

.43/1

- 2

.477/4

- 3

.144143/2

- 4

.147

- 5

1

2

()
()

()

()

³ ()

⁵

⁴ ()

6

		<hr/>	
		.43/1	- 1
	39/1 (5)		- 2
		.43/1	
135/1		18/1	- 3
	.47/1		30/1
		.19	- 4
		.45/1	- 5
135/1		18/1	- 6
		.45/1	

.¹

()

.²

): ()

.³ (

()

()⁴

()

()

.⁵

()

()

:

()

()

: ()

18/1

37/1

.42

- 1

- 2

.26

- 3

.297/1

- 4

.375/1

- 5

()

()

.1 ()

(): 2 ()

3

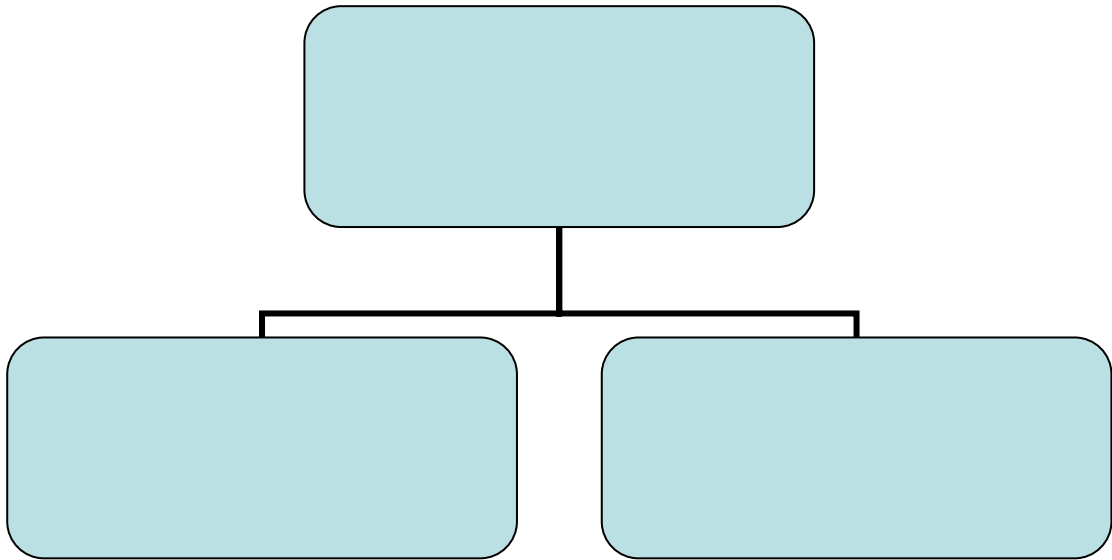
4 ()

(): 5

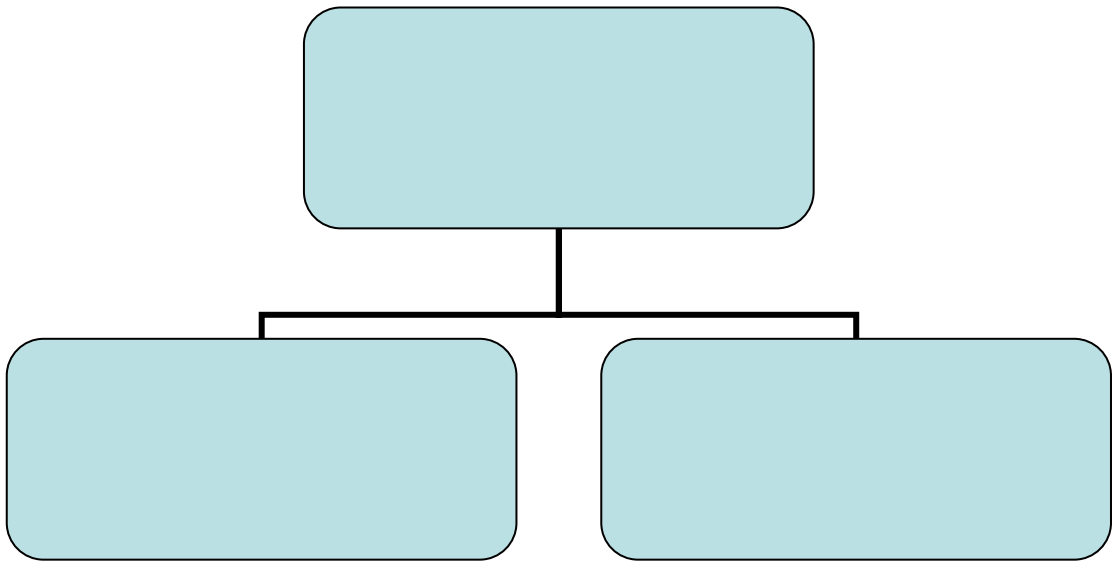
.()

:

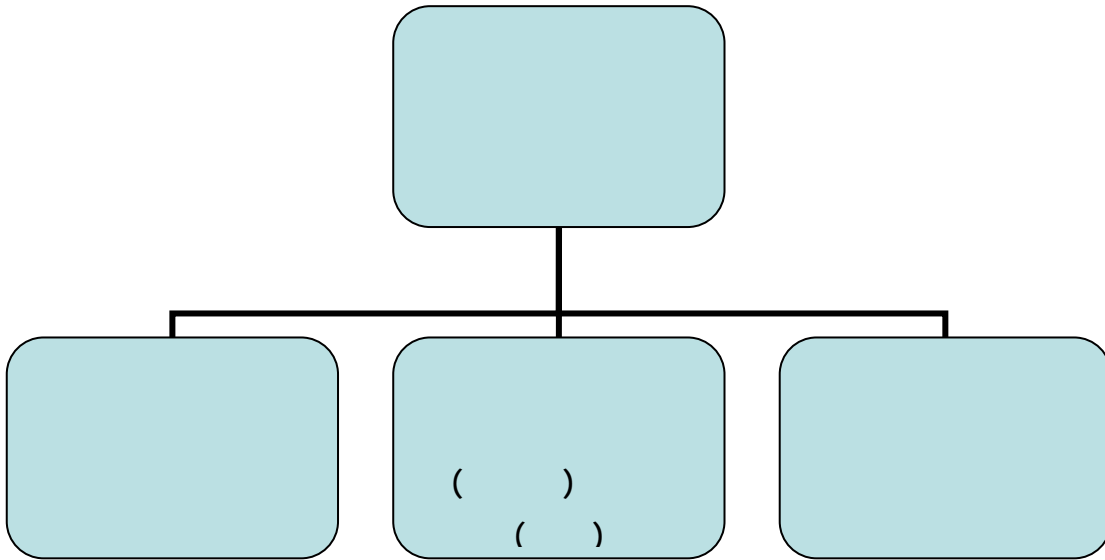
	.369/12		- 1
460/1		283/4	- 2
		.49/2	
		.185/7	- 3
328/2	460/1		- 4
	.185/7	49/2	
	.369/12		- 5



⋮



⋮



()

()

):

.1 (

2

3

.27	- 1
.44/2	- 2
.329/2	- 3

()

() () 1

() 2 ()

. ()

4 3

()

... :

:

. 5 () :

() ()

6

: () ()

()

7

() () () :

()

() : ()

()

356.355/8

188/7

- 1

99/1

338/14

.189/2

286

()

- 2

.566

938

142/7

.188/7

519/2

- 3

.169/2

- 4

.77/14

- 5

.188/7

- 6

.40/4

- 7

:

()

.1 " ()

"

.2(

3

4

()
.5 ()

6

()

()

.45	- 1
.60	- 2
.457·456/2	- 3
.423/2	- 4
264	- 5
.15/4	- 6

()

1

)

.()

(

): ()

.² (

()

3

()

): ()

.(

4

:

.

"

.⁵ "

6

): ()

.274/15 - 1

.21 - 2

..207+206/2 - 3

.47/3 - 4

.43 - 5

.47/3 - 6

() () :

) :

() () ()

()

1

()

: ()² ()

()

()

3

4

			47/7	- 1
114/3	1152/2	150/25	165/16	
		.268/2		
	89/25	165/16		- 2
114/3	661		325	
			.256/9	
		.97·96/4		- 3
		.93/1		- 4

()

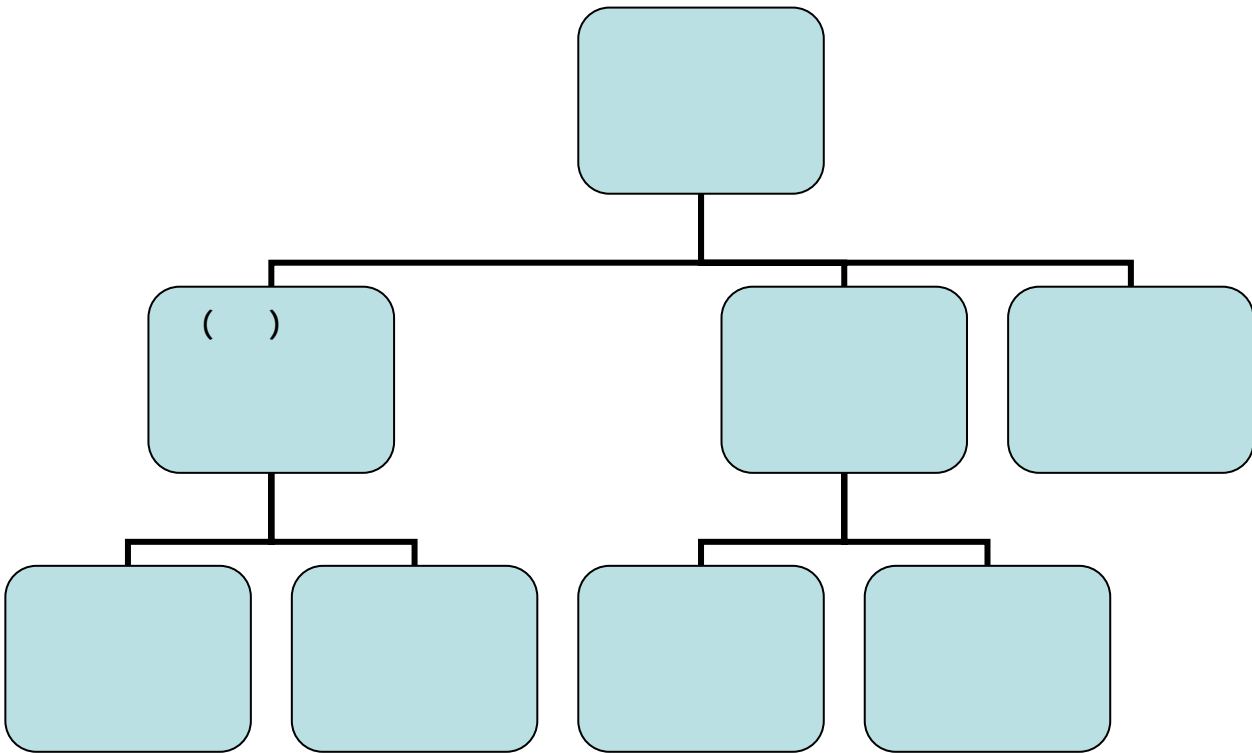
()

1

2

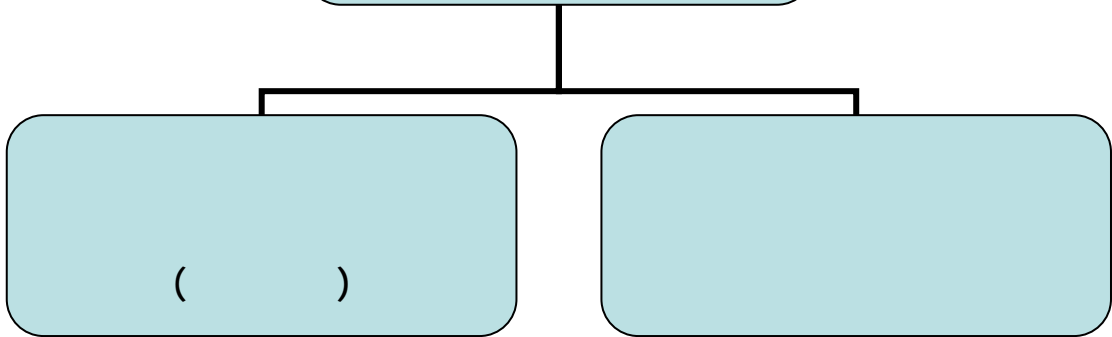
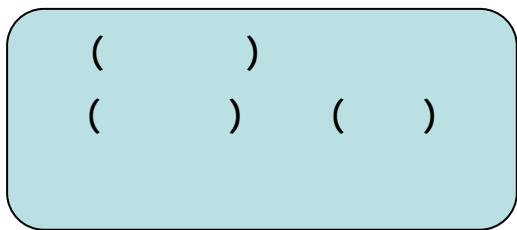
()

:



.47/8 - 1
.31,29/2 - 2

:

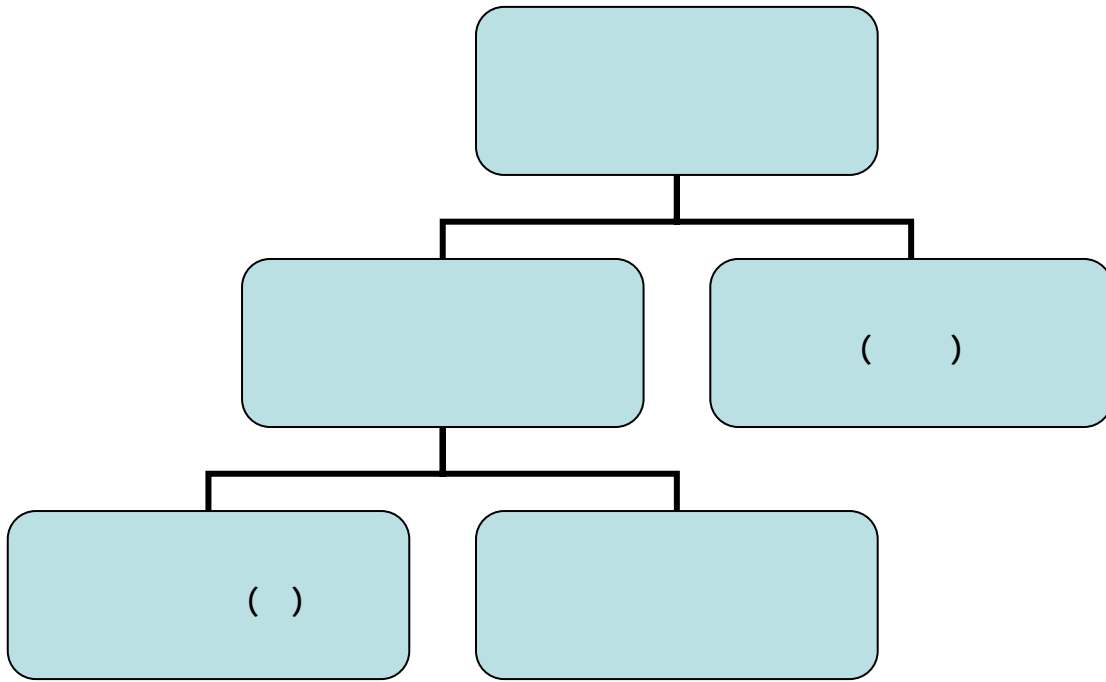


.()

:

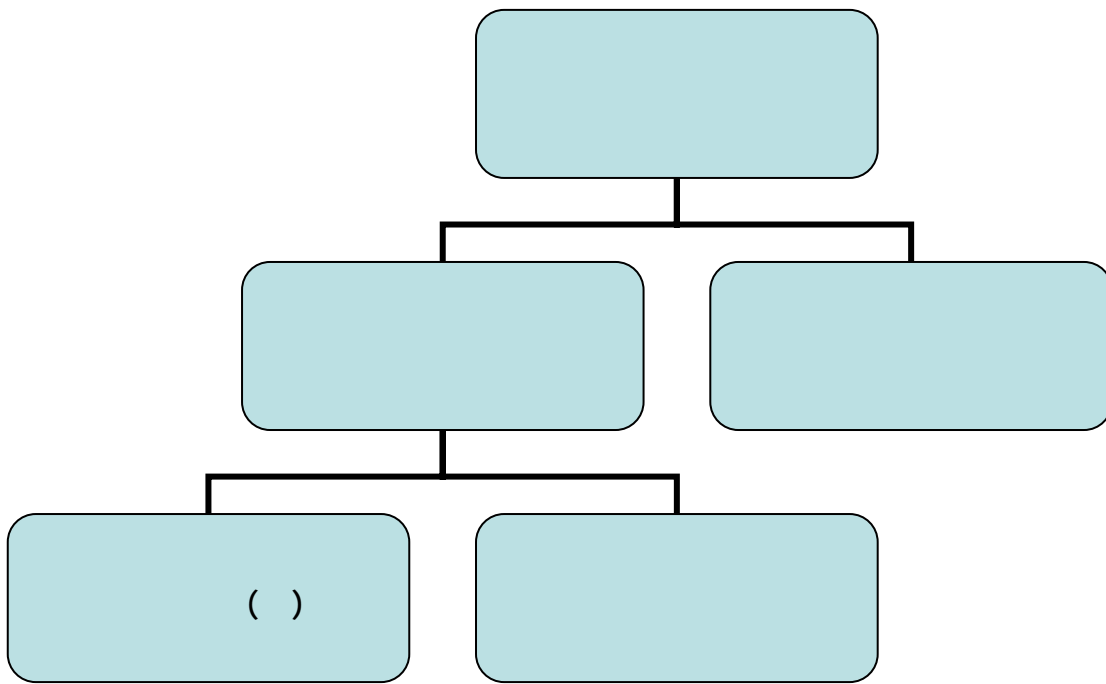
:

-1



:

-2



.

: 2.1.1

1

"

2 "

()

):

3 (

4

() ()

) ():

.(

5

):

): () (

() (

()

6 ()

87/1	62/1	126/2	- 1
67/1	46		- 2
		.185	- 3
		.159/1	- 4
		.113•112/1	- 5
	153/1	55/1	- 6
	.253/1	59/2	291/2

(): ()
.():

¹ ()

():

.

²

()

()

()

()

()

"

³ "

)

()

⁴

) ()

(

. (

()

121/2

96/1

- 1

.291/2

.113/1

- 2

.17

- 3

.445/3

- 4

1.

·
):

2(

.(

4

5.

3 ()
) ()

()

()

()

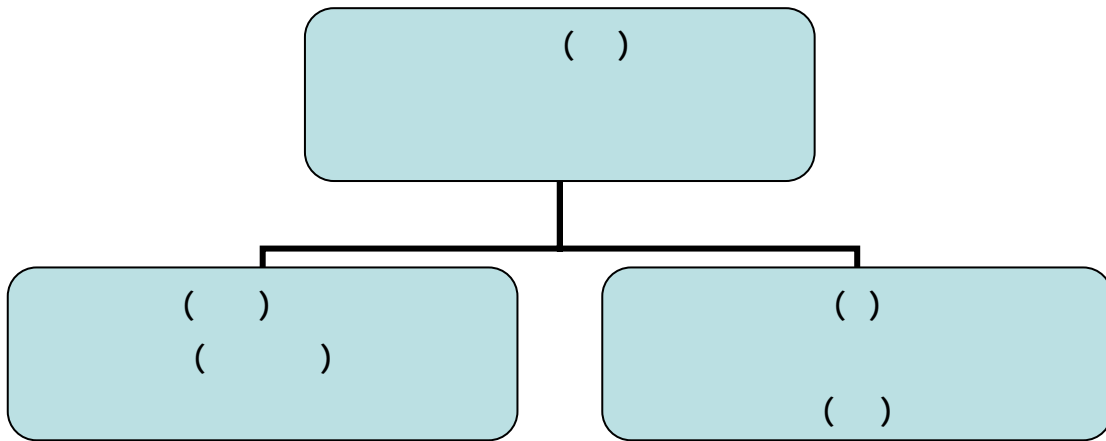
()

()

()

:

.110•109/1	- 1
.154	- 2
.153/1	- 3
.93/1	- 4
.169	- 5



() ()

()
3

2

1

()

()

): ()

5

⁴(...

85/1

621/1

- 1

.173/2

- 2

.35/2

- 3

.41

- 4

.258/1

- 5

():

): () ()

.(

1

² ():

³. ():

4

() ()

⁵():

6

():

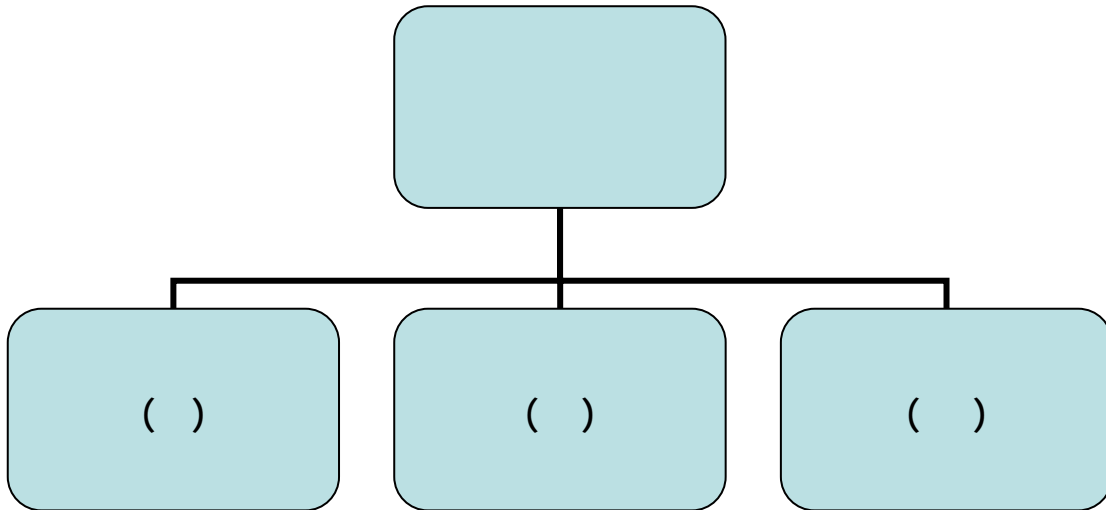
) () ()

): (

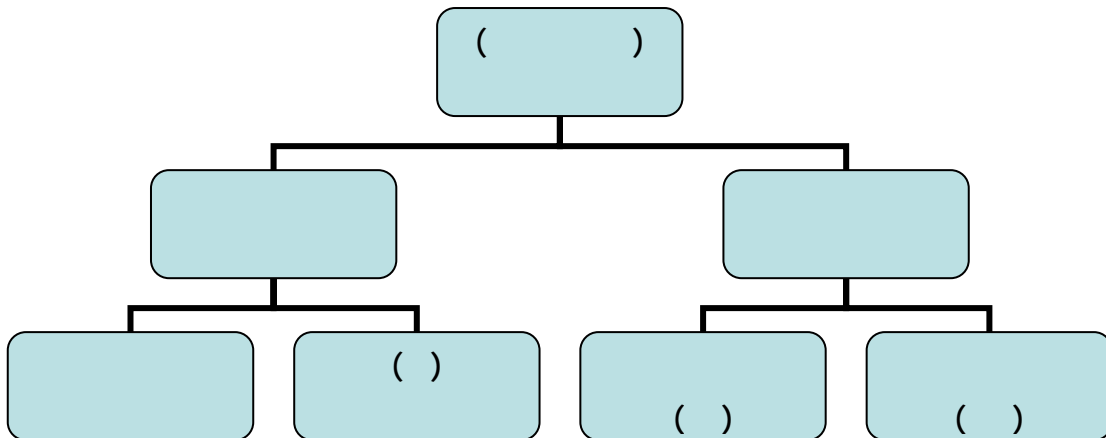
⁷ (

.309*308/1	- 1
.58	- 2
.58	- 3
.309*308/1	- 4
.61	- 5
.181/1	- 6
.268/1	- 7

:
: -1



: -2



"
()
() () : () :
) () () : ()
() :

() () ()
 .() ()
 : **2.1**

) 1
 (
 .
): ()
 .²(
 () 3
):
 .(...
 ()
 .⁴
 () () 5
 ()
 .(...):

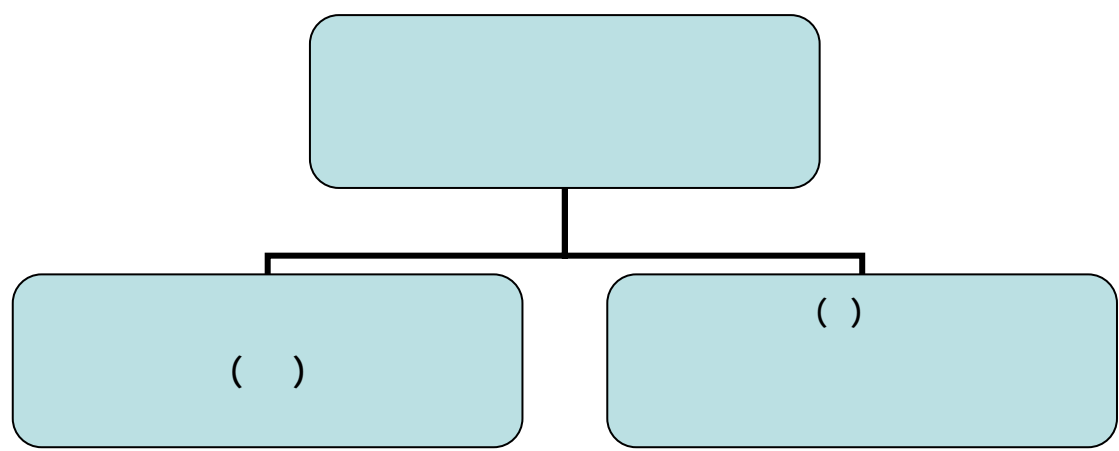
.544/1	143/1	- 1
	.16	- 2
	.439/2	- 3
	.121	- 4
	.328/2	- 5

2 () 1
3

()

:

:



.286

286

513

182/7

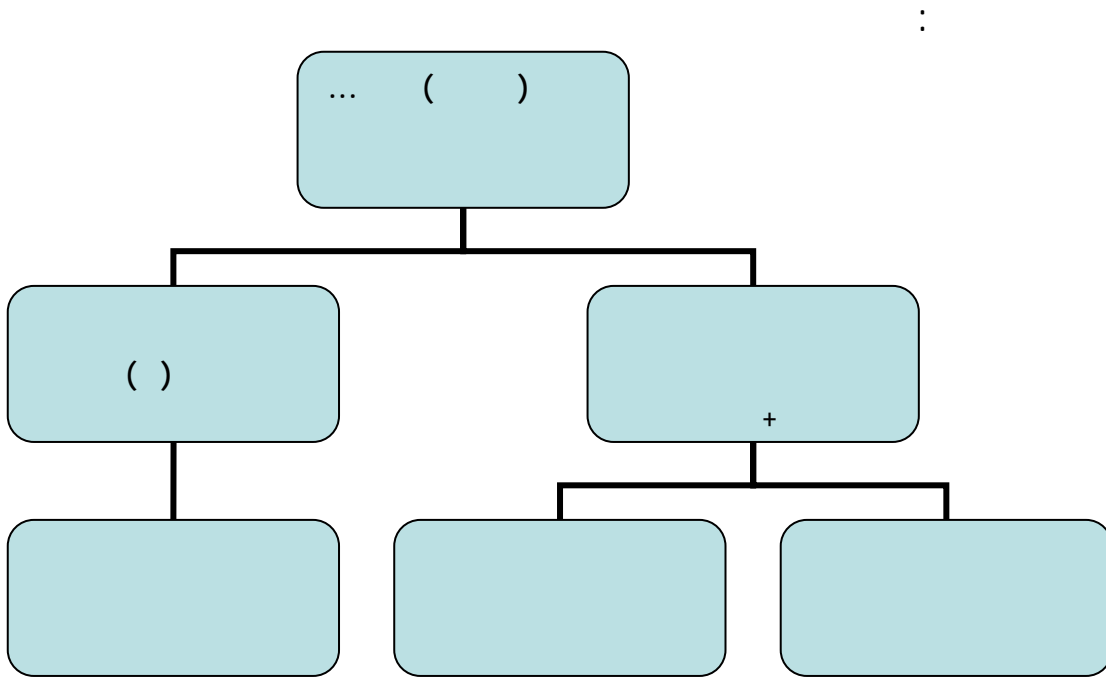
.194/3

.513

- 1

- 2

- 3



1 .()

): ()

4 $.^2($
 $()^3$
 $()$

.63	- 1
.18	- 2
.446/2	- 3
.368/2	- 4

"

. 1 "

2

)

.(

() () 3

.

4

5

" () " 6

":

7 "

"

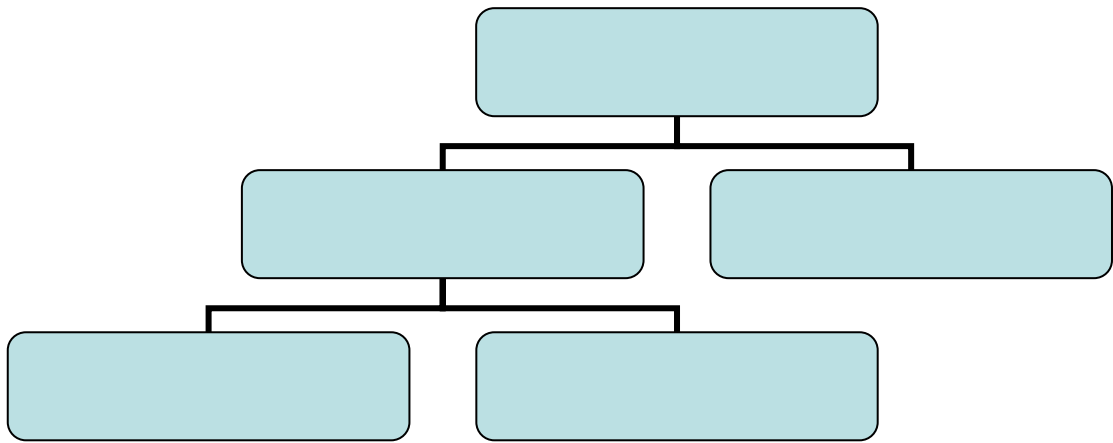
8

() () "

.

:() ()

	.165	- 1
.528/8	182	- 2
	.196/5	- 3
	.115·114/7	- 4
	.65/1	- 5
	.529·528/8	- 6
	.115·114/7	- 7
	.431/1	- 8



()
 .¹():
 () ()²
 .()
): ()³
 . ()
 :
 4
 .() () () ()
 () ()⁵
 : () ()
 6
 . () ()

		.3	- 1
		.453/2	- 2
		.453/3	- 3
183/4	30		- 4
	.147/15	71/4	
		.397/2	- 5
.178/4	70/8		- 6

1

:

.()

()²

()

()

3

()

()

()

()

4

()

5

():

.398·397/2

- 1

146/15

383/7

- 2

.271

3/3

320/4

124/2

58/1

- 3

205/1

135

109/1

.77/23

112

163/23

383/7

- 4

123/2

320/4

296/7

.367/7

33/9

.58·57/1

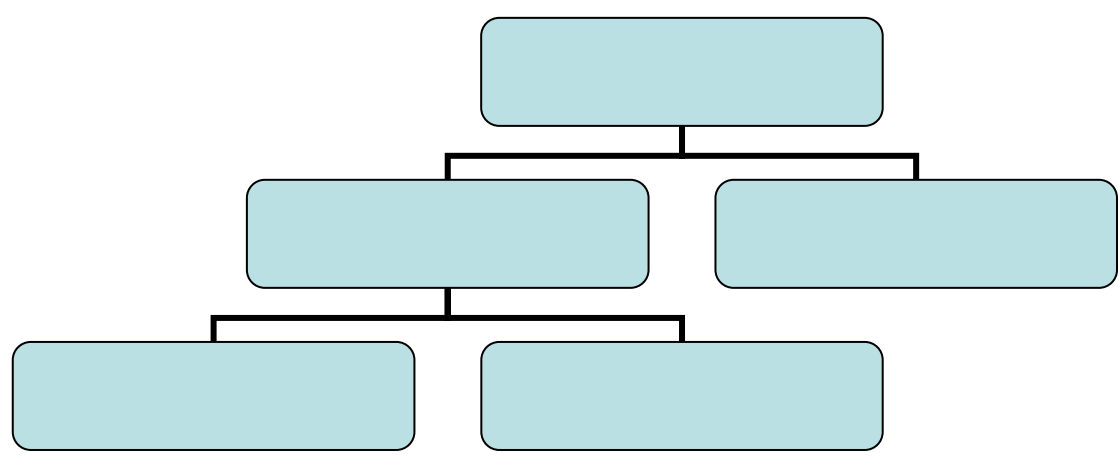
- 5

() 1

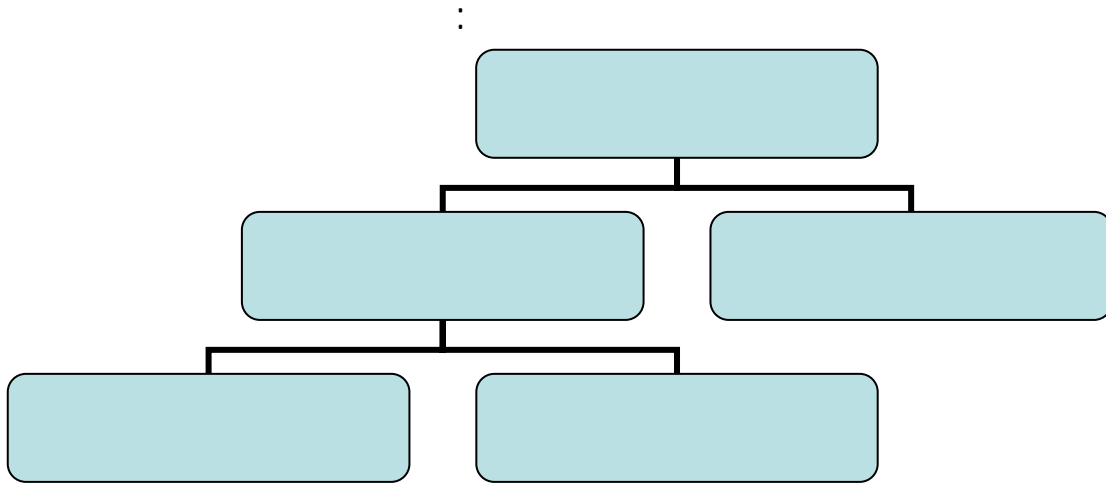
2

()

:



.71/4	- 1
.303/3	- 2



)

(

: **3.1**

()

.¹ () : ()

()

.² (*) :

() () ()

()³

() ()

()

): ()⁴

()

.272/1

- 1

.16•15 - 2

.508/2 - 3

.508/2 - 4

-3
-4

.1

()

()

:

.2 ...

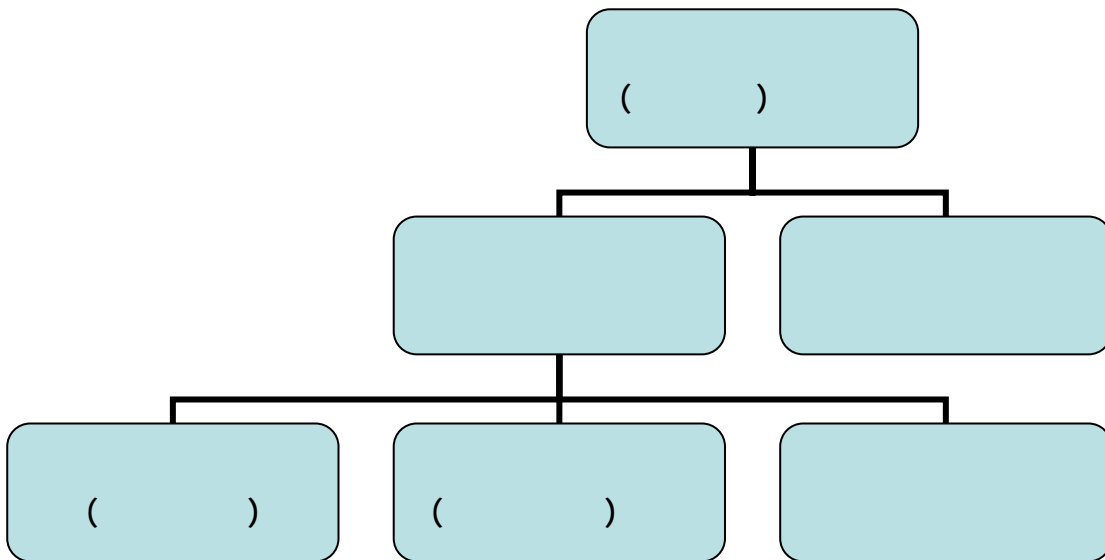
:

:

3

:

:



.83/10

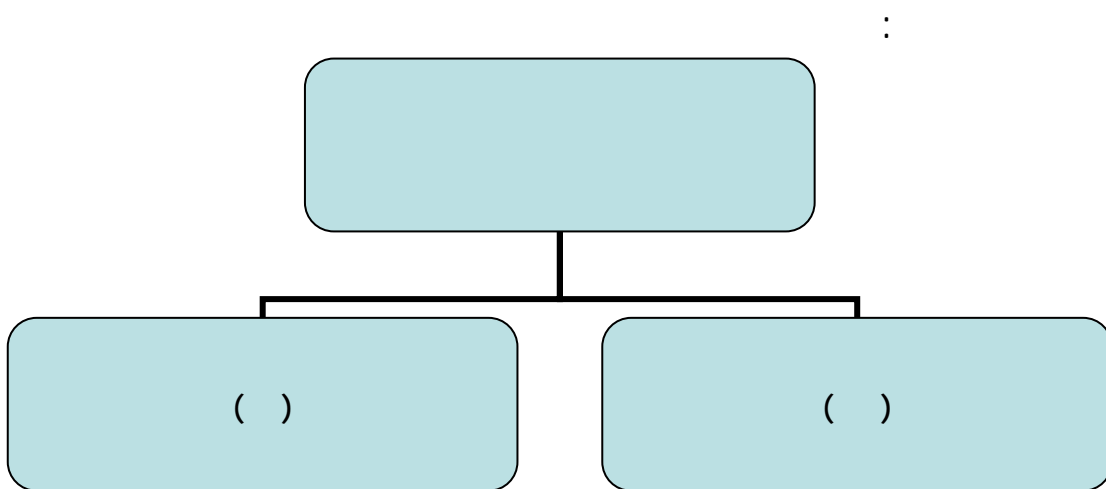
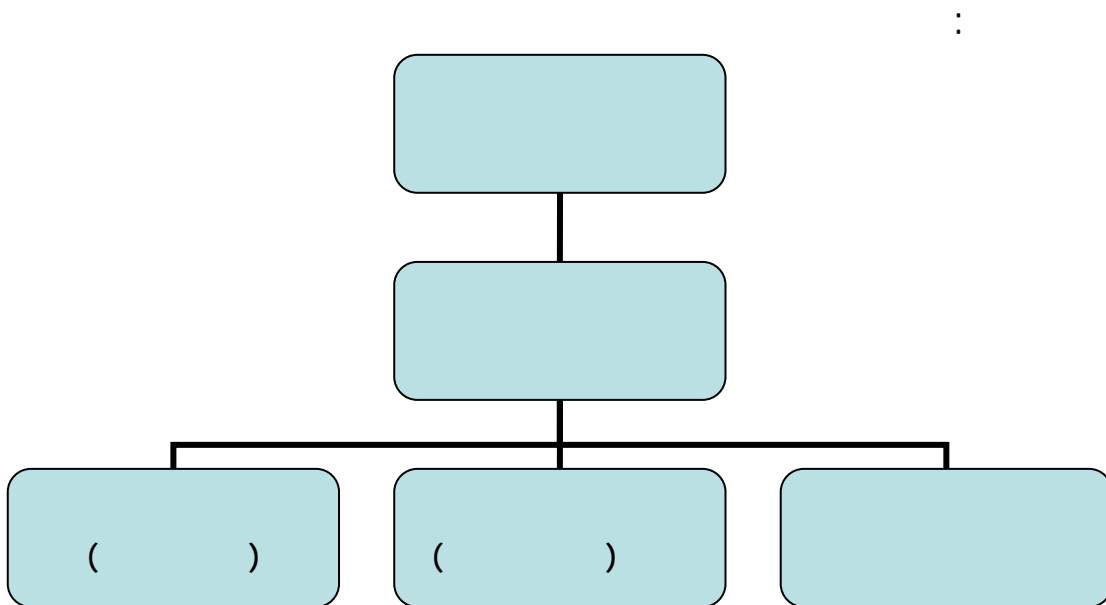
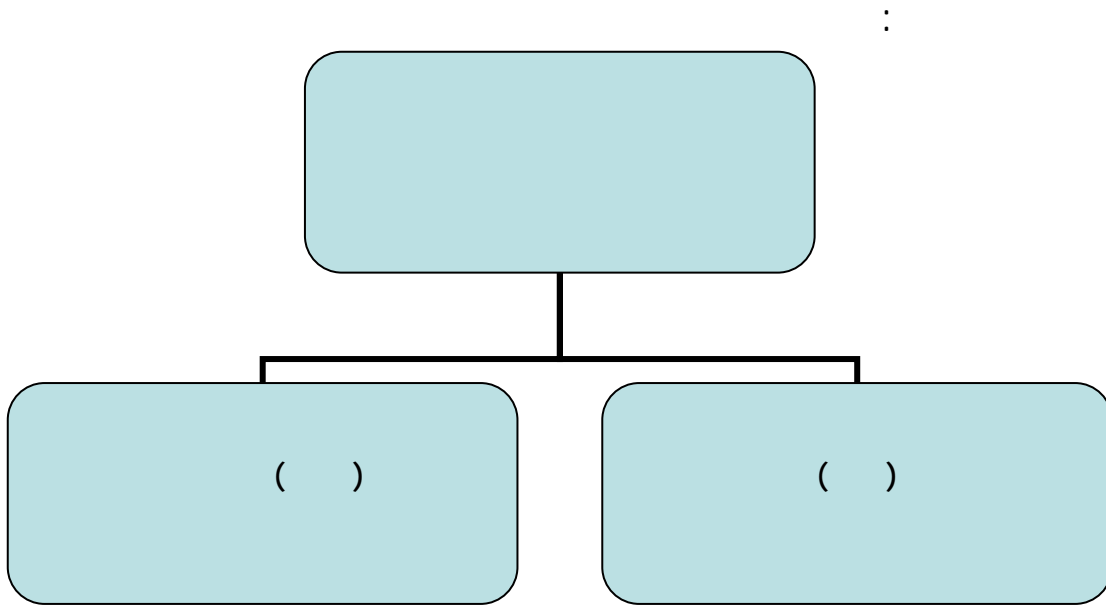
- 1

.421/4

- 2

.45

- 3



):
 () ()

¹ ()
 3 2

()

()

()

()

.

()

4

()

5 "

"

! : ":

6"

.

)

"

⁷ (

.63 - 1

.408/2 - 2

.184·183/2 - 3

.184·183/2 - 4

.184/2 - 5

.39 - 6

242 - 7

.129/3 108/7

895/2

99/2

"

1

)

2

(

()

3

4

()

)

(

: **4.1**

:

:

5

:

255/6	306/2	- 1
108/7	221/16	182/7
		.212/6
221/16	255/6	- 2
235/1	137·136/16	
.242		180/2 133/1
	.364/3	- 3
	.216/11	- 4
87	201·253	- 5
	.355/1	

: ()
 .1 ()
 () 2
 () ()
 () () 3
 4 ()): ()
 () ()
 () () 5
 () () 6
 () () 7
): (

	.37	- 1
	.67/1	- 2
	.28/1	- 3
	.124	- 4
75	54/1	- 5
.154	236/1	
47/1	100/4	- 6
	.167•166/1	- 7

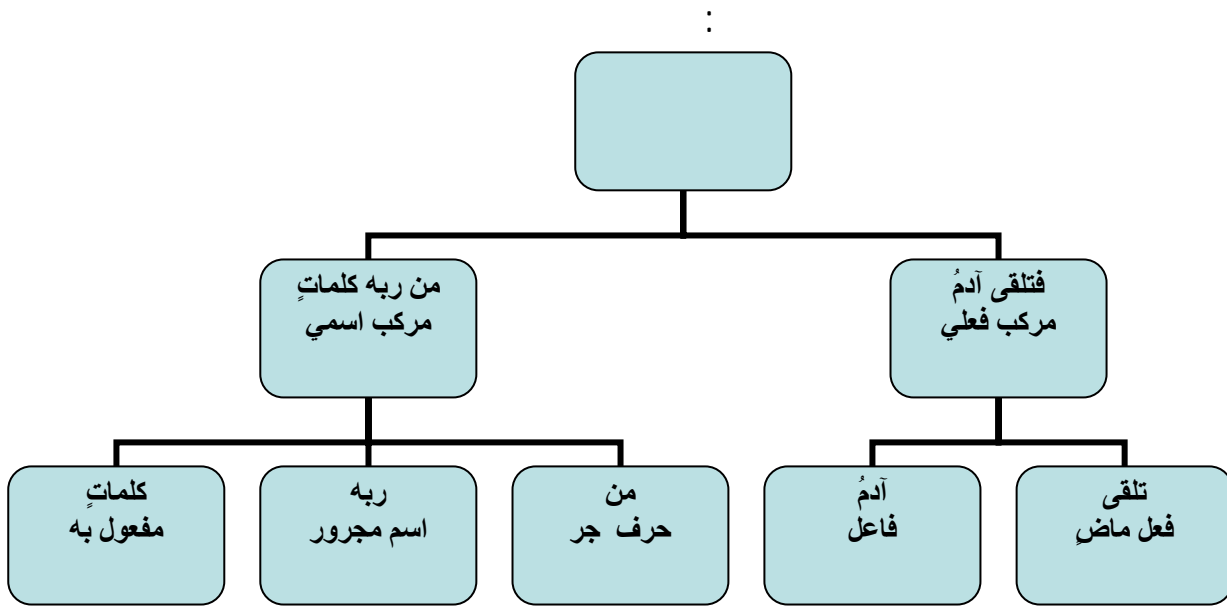
()

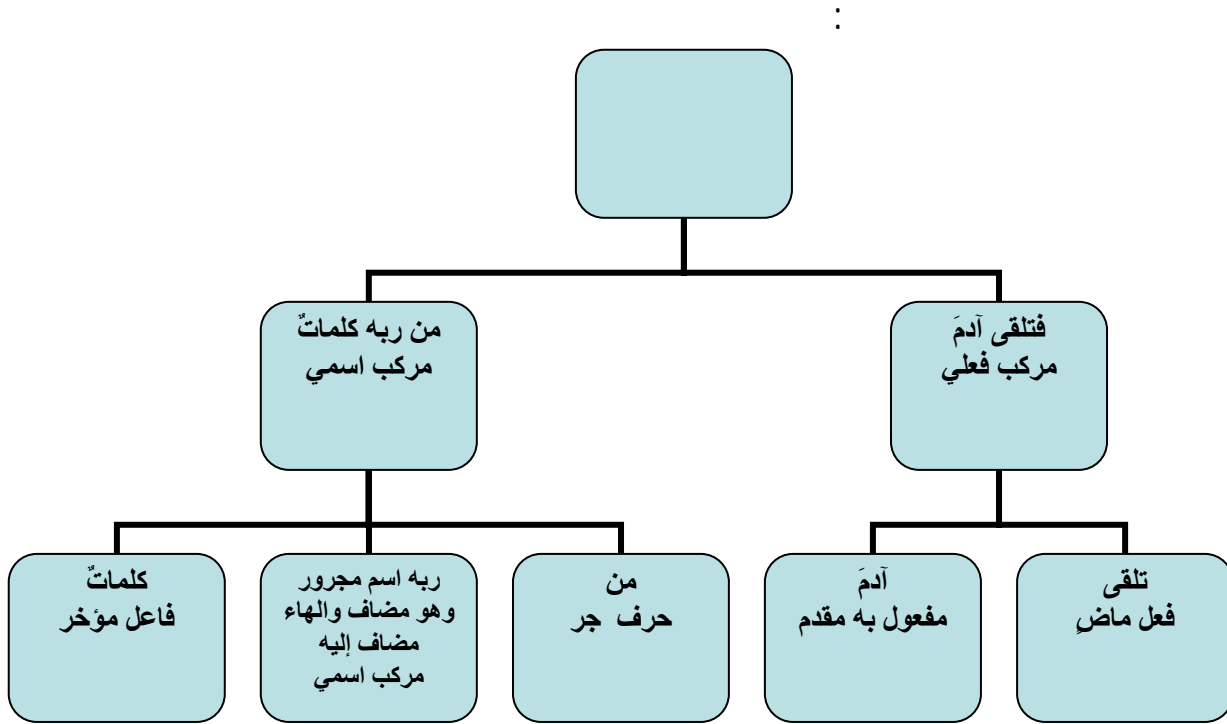
1

()

):

(





()

()

() ()

1

()

(← ←)

2

.106/1

- 1

.260

- 2

. - -
()

.

:

.

:

-.1

- : .2

. .3

. .4

: **1.2**

: **1.1.2**

() :

.1

95

93

- 1

.241

()
 ()² .() :¹
 () .() :
 ()³
 ()
 .() : ()
 ()
 ()
 .()
 - ()
 ()⁴ -
 .() : () :
):⁵ ()
 .(

	.219	- 1
	.141/1	- 2
	.172/1	- 3
	61/3	- 4
238/2	156/1	347·346/4
	.293·292/1	
	169·168/2	- 5
	.238/2	293·292/1

()

() :

()

() :

()¹

()²

()³ ()

() (... ()⁴ ()⁵

() ()

.169,168/2	- 1
.347,346/4	- 2
.84	- 3
.342/1	- 4
.281/2	- 5

()

()

1.

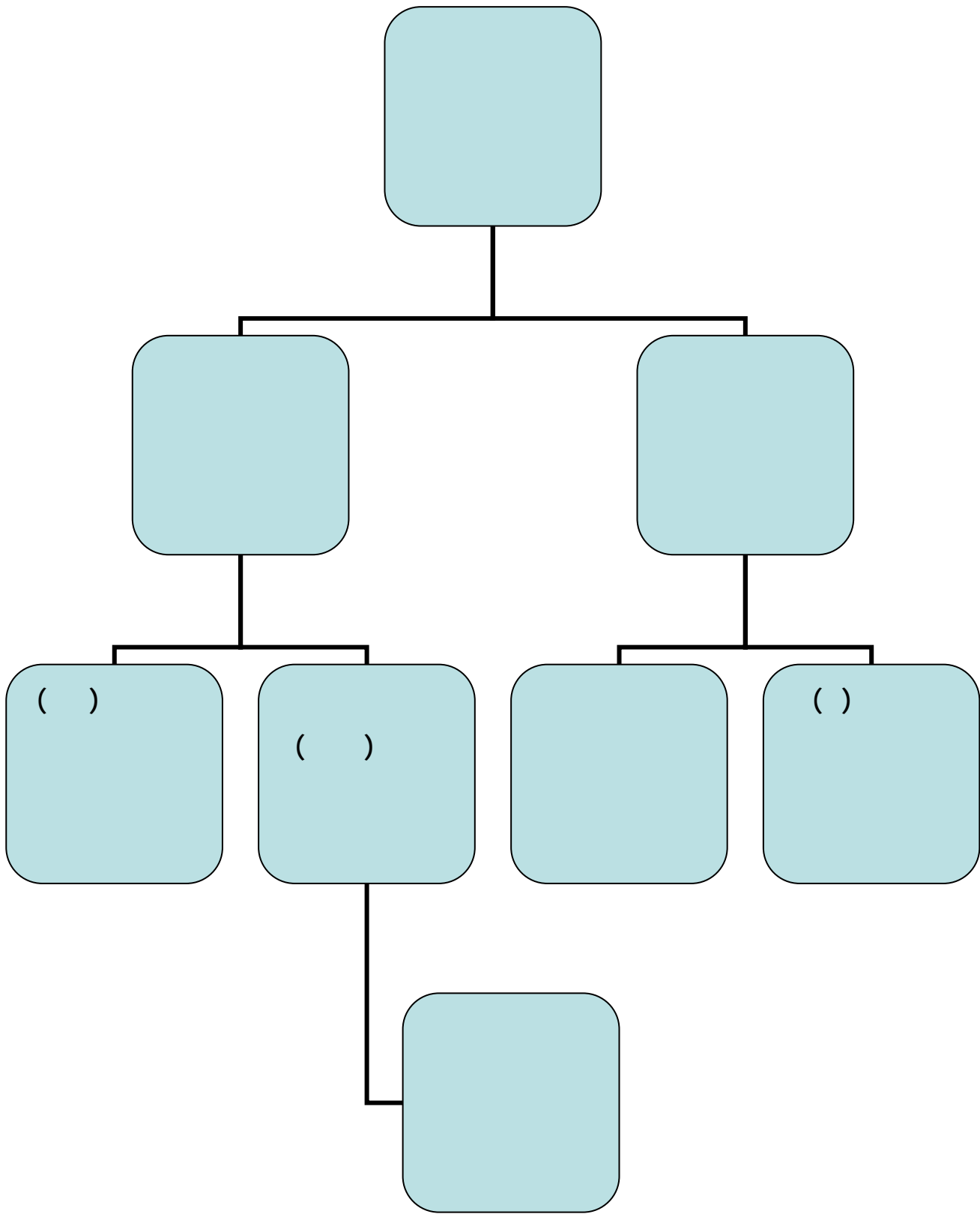
.()

()

()

()

:



()

()

1 .

: **2.1.2**

2 .

):

³.(

()

4

	.283,282,281	- 1
89	284/1	- 2
	.305/2	242
	.71	- 3
	.346/2	- 4

¹ (): .()

²
.
3

):

(

.

()

(): .

"

⁴ "

.390/2 (66)

.23

.67	- 1
	- 2
.346/2	- 3
	- 4

(\quad) (\quad)
 $^1.(\quad) : (\quad) :$
 $(\quad) : (\quad)$ 2
 $(\quad) :$
 $(\quad) :$ 3
 $(\quad) :$ 4
 5 (\quad)

	48/5	- 1
158/11	.57	
158/11	48/5	- 2
.48/5	.57	
.149/15	179/5	- 3
51/2 334/1		- 4
	.231/2	- 5

:1

2

() .() () :
 3
 () () :
 .() ()
 4
 () () :
 :

5

:

() ()
 () () () :
 .()

6

	.153•152/2	- 1
	.409/5	- 2
	.178•177/5	- 3
	.178•177/5	- 4
.299/1	8/2	- 5
	.681/1	- 6

()
"

2 "

:

:

(

)

(

)

3

(

):

4

5

(

)

-

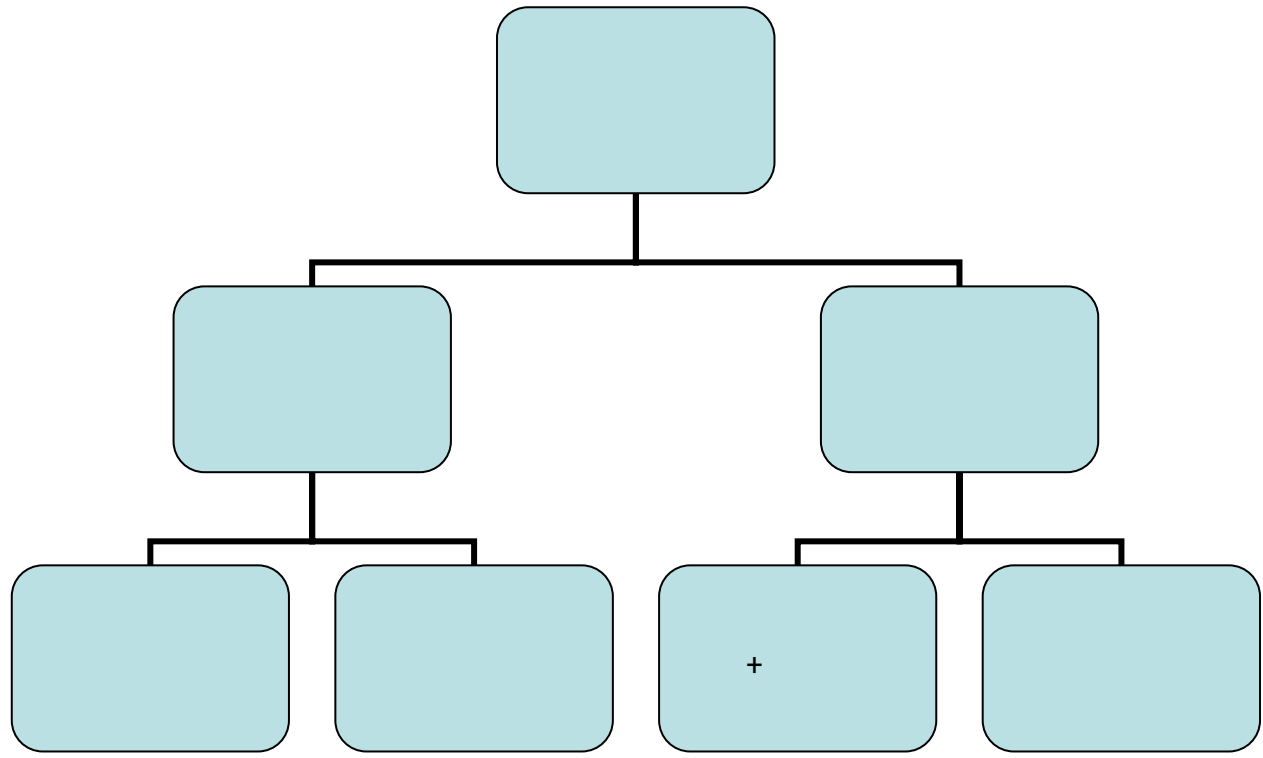
-

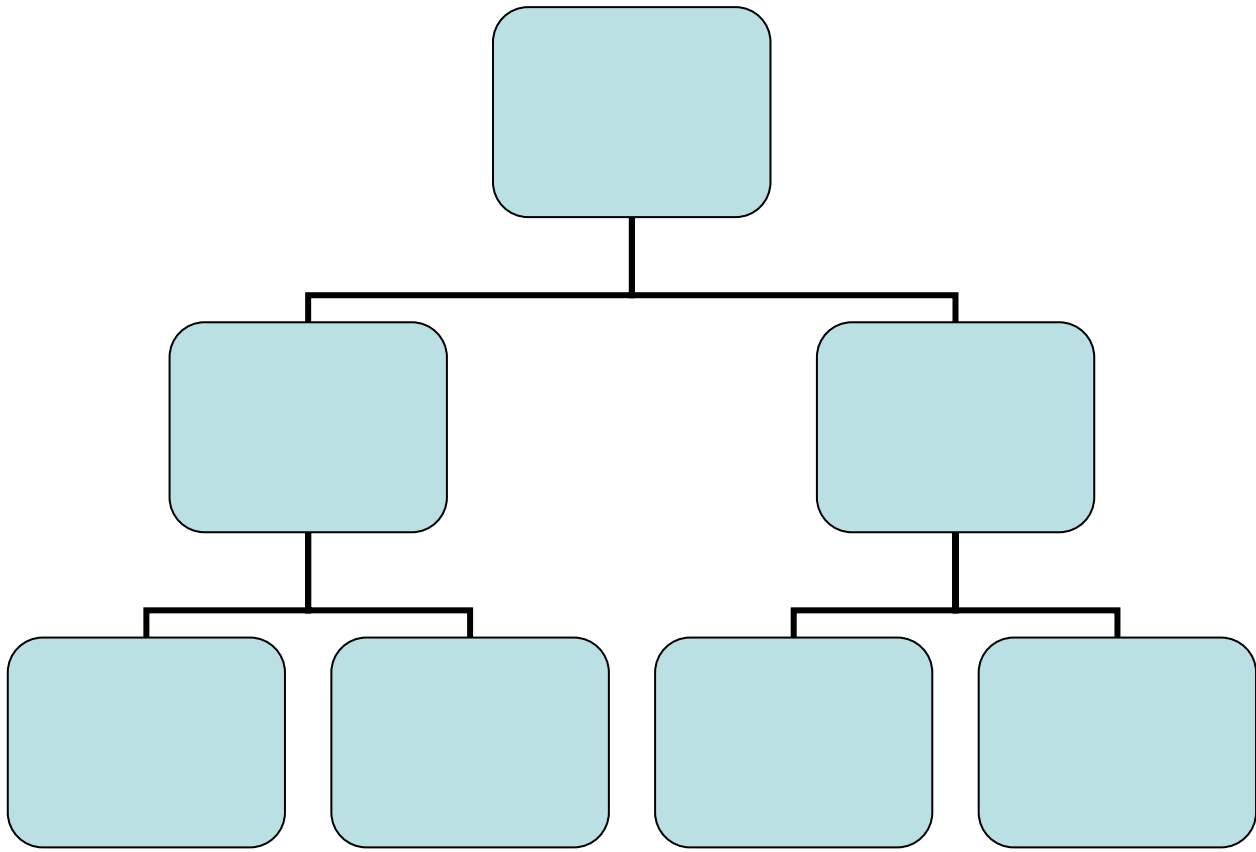
.153•152/2	- 1
.298-277/1	- 2
.50/2	- 3
.51•50/2	- 4
.334/1	- 5

()

.

:

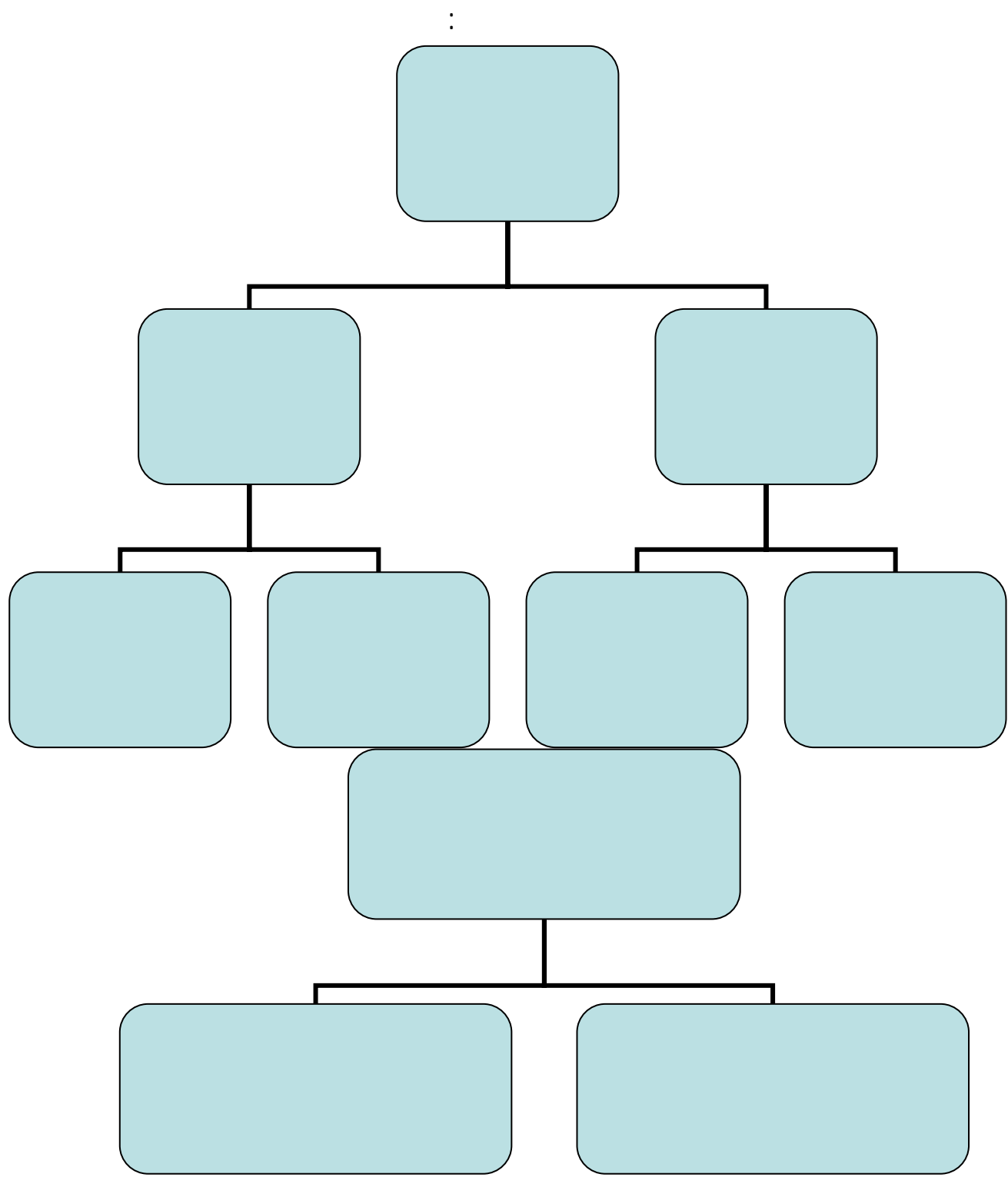




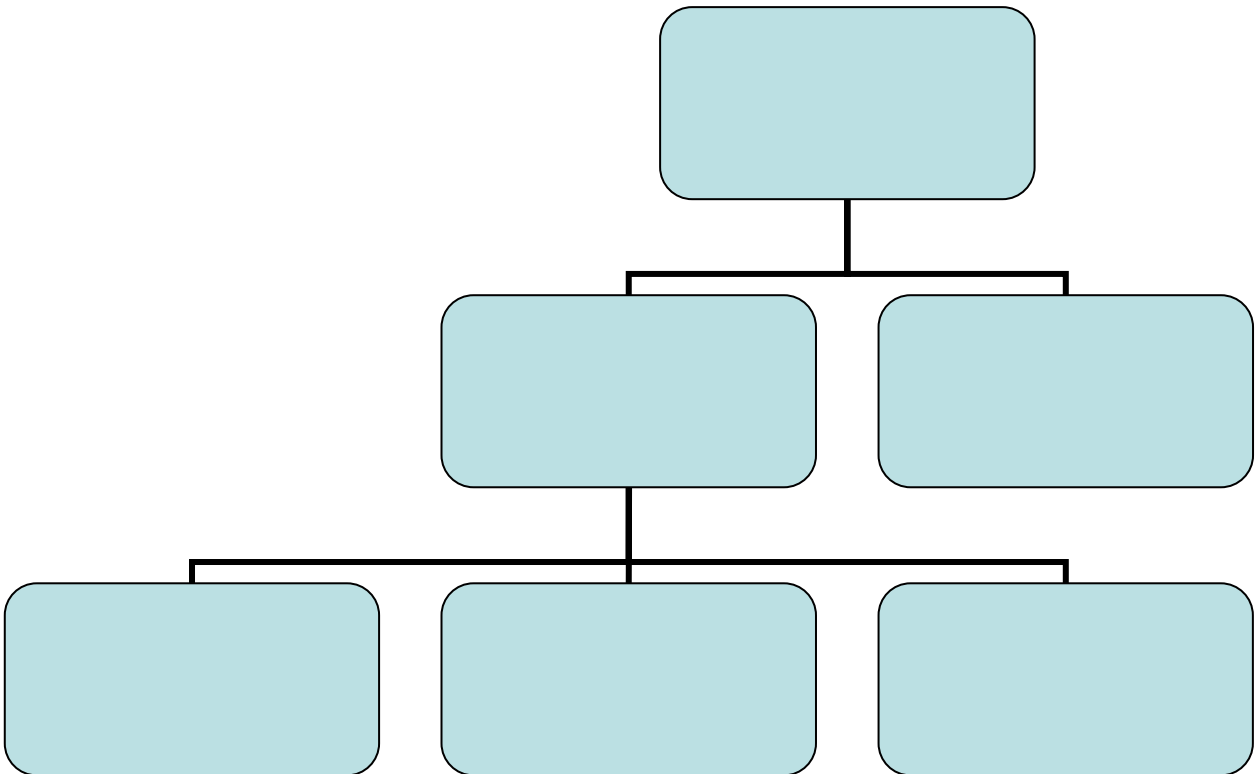
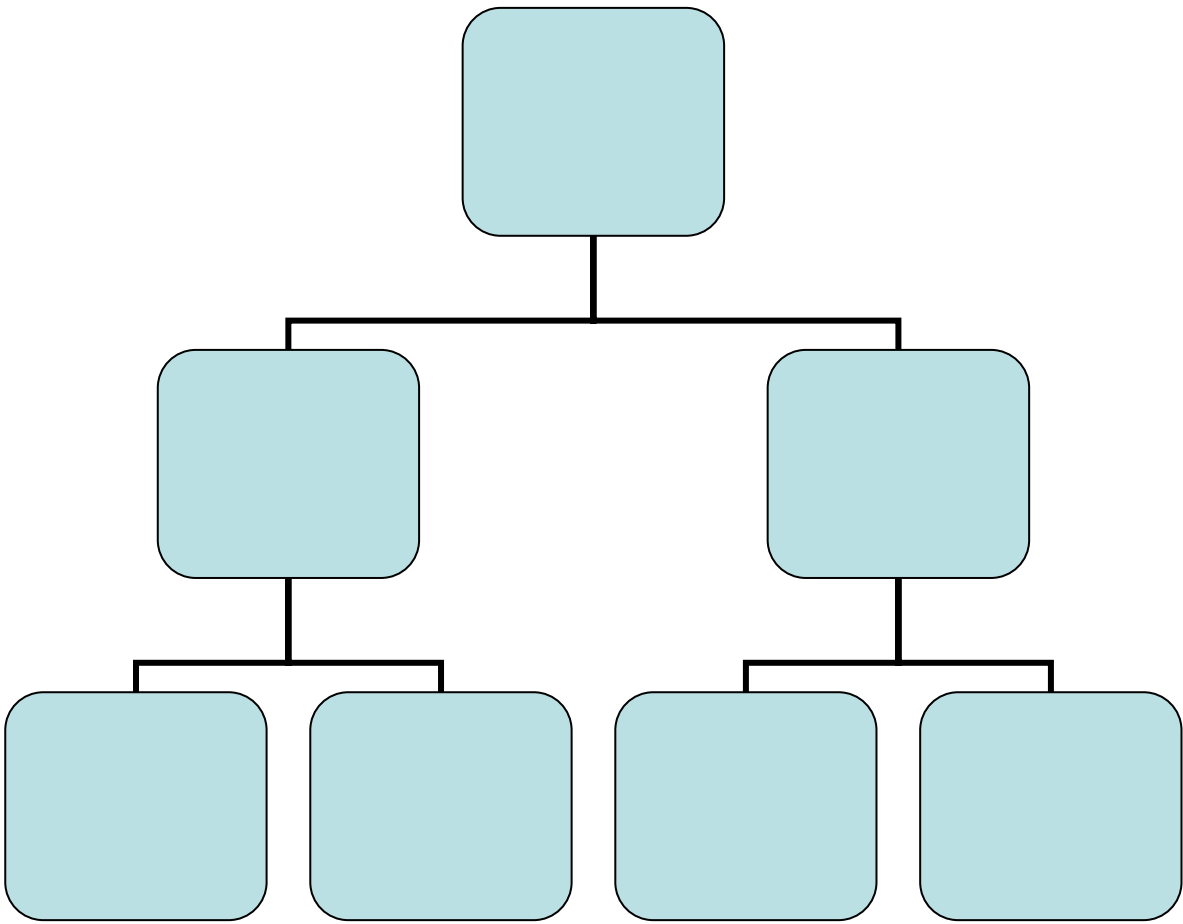
() () :

.¹ ()

.



:



()

)

(

: **3.1.2**

.¹

" :

2

"

*

):

()

.³ (

:

()

.⁴

118

192/4

- 1

.1613

.62

- 2

.4

- 3

.174/2

406/2

- 4

()

.1 "

" :

.2

()

3

) (): () () ()⁴

5

()

(

()

6

.

()

7

.():

:

.152/18

83

- 1

.3

- 2

.174/2

- 3

.65/2

- 4

169/11

427/2

- 5

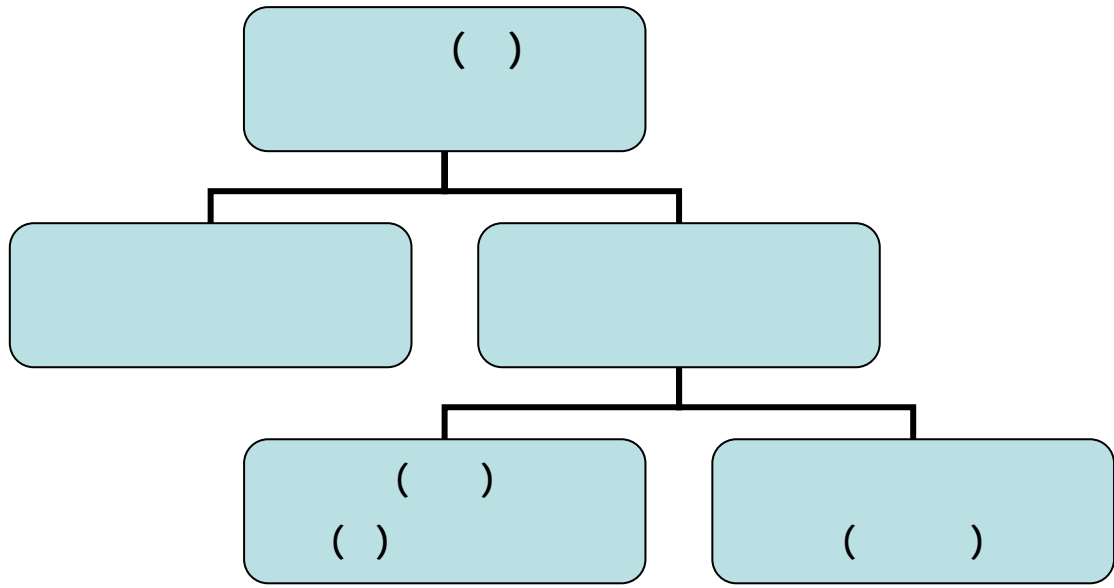
.55/16

.23/3

- 6

.213/6

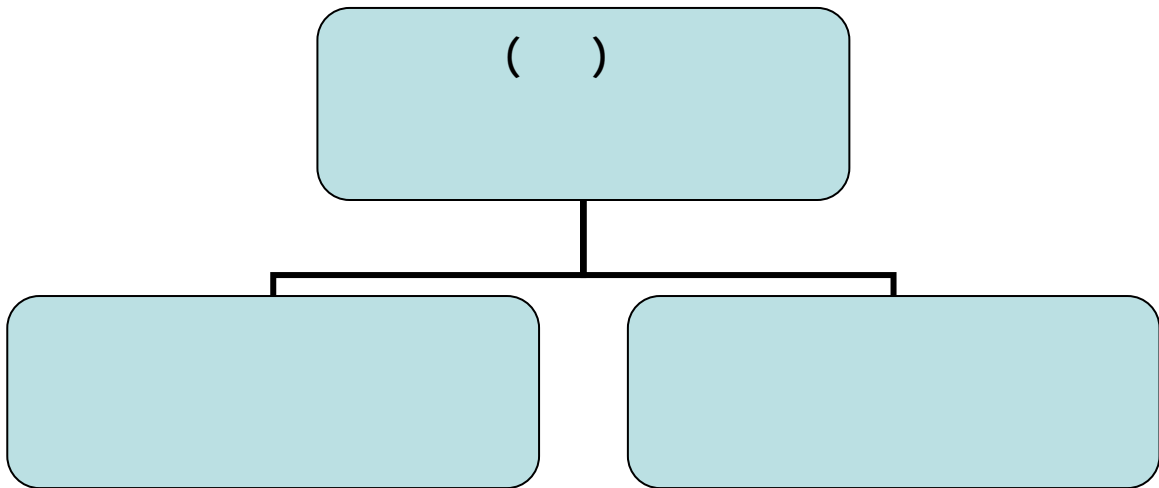
- 7



()

()

()



()

()

) 1 " " : ()
):
 2 ()
 3 ()
 .() : ()
 : 4
 :

()
 () () " " " " :
 .() : ()

	.217	- 1
	.285	- 2
	.192/1	- 3
	.188/1	- 4
	.380/2	- 5
.281,280/1		- 6

" 1

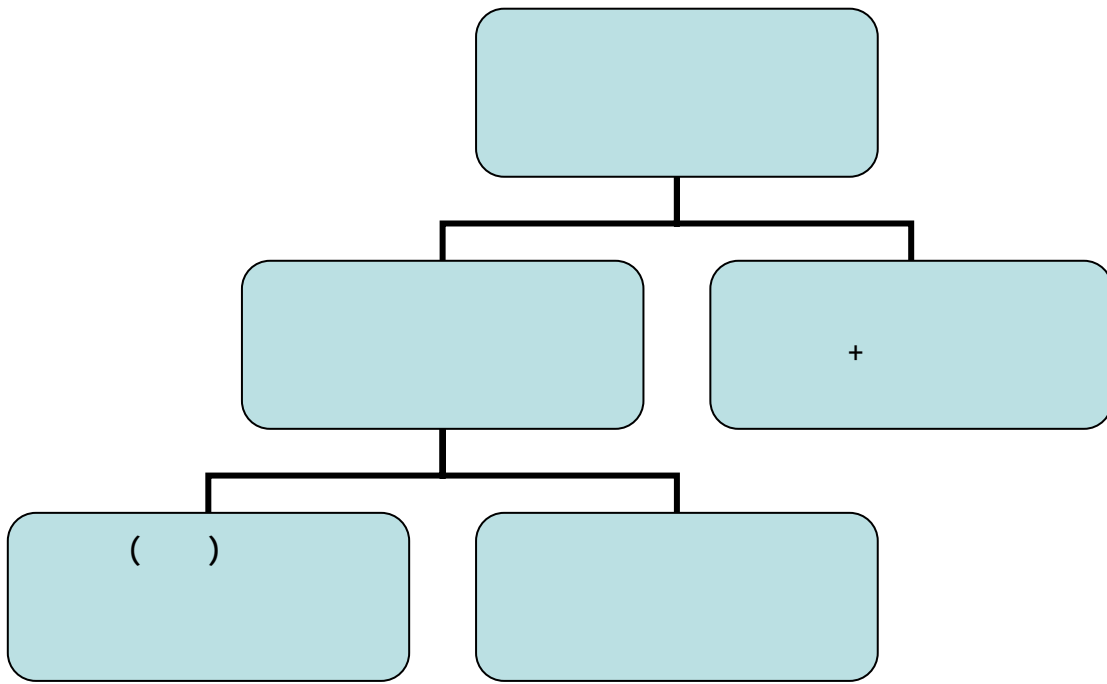
:

"

()

.

:



()

()

.113/1

- 1

()

.()

"

.1 "

()

):

.² (

3

():

()

.()

()

.()

4

"

":

.():

.161,160

- 1

.240

- 2

.178/1

- 3

.156/1

- 4

: $^1 ()$

.

$^2 ()$

:

$^3 ()$

(): ()

.

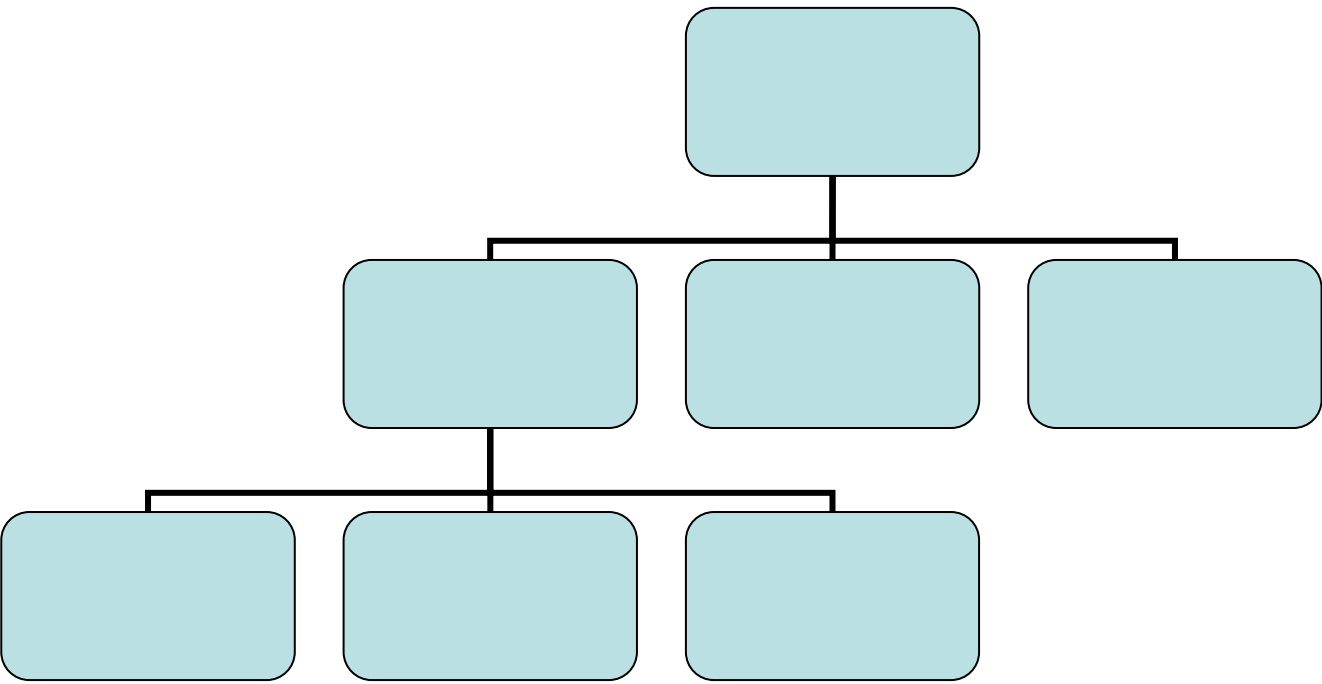
.

.

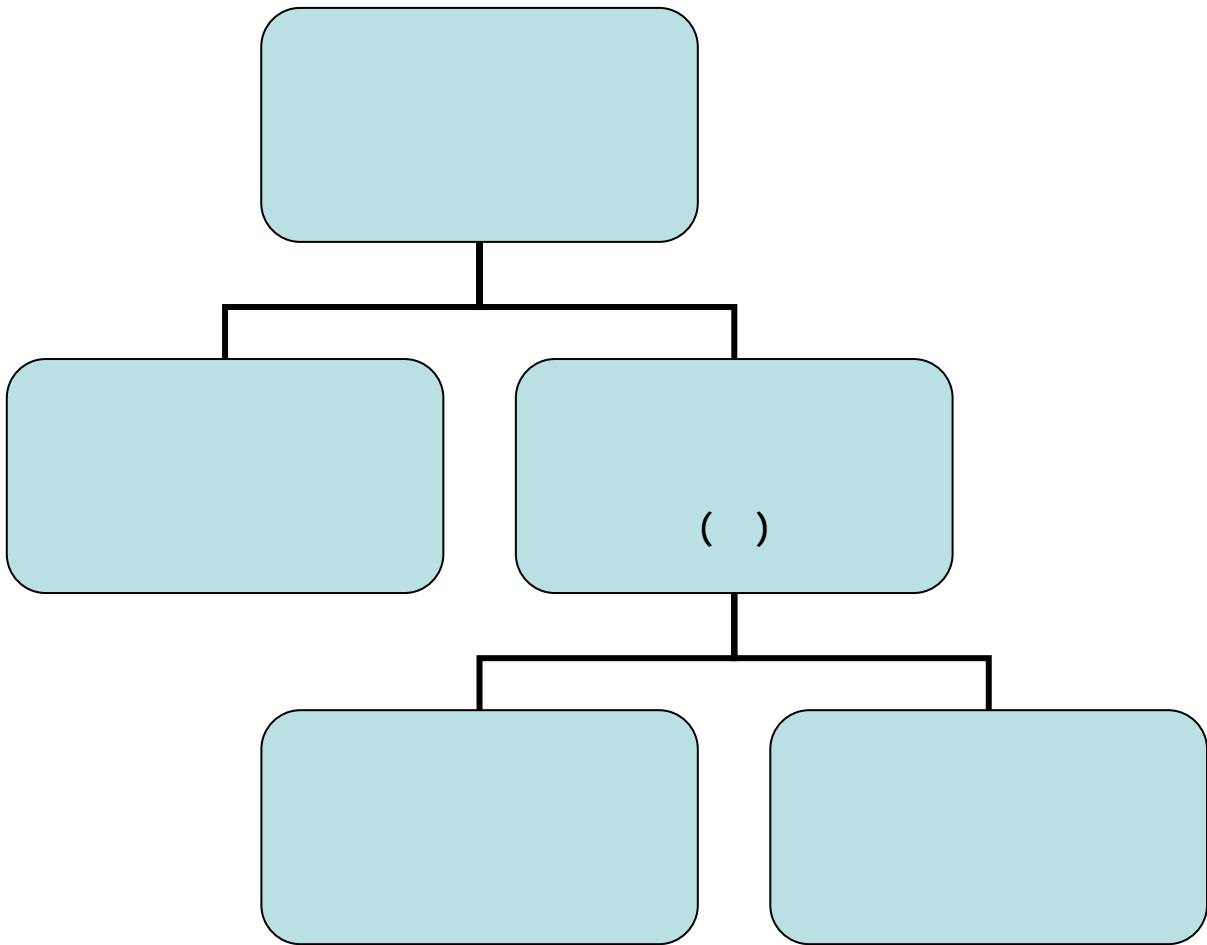
:

	578/2	- 1
98	286/1	299/1
	.257/2	
254/2	578/2	- 2
299/1	192/1	
	.257/2	
	.98	- 3

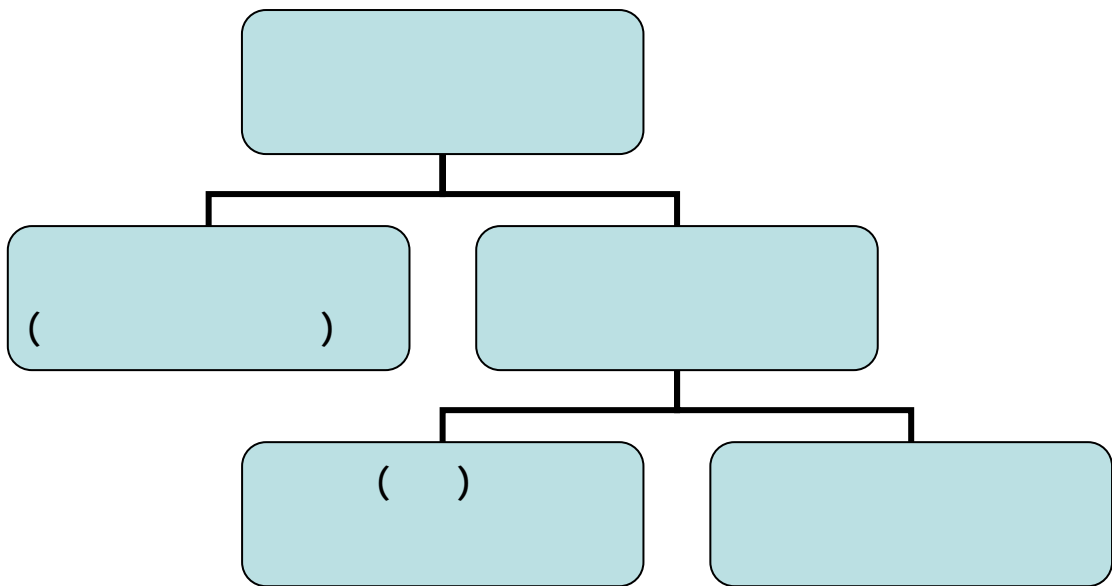
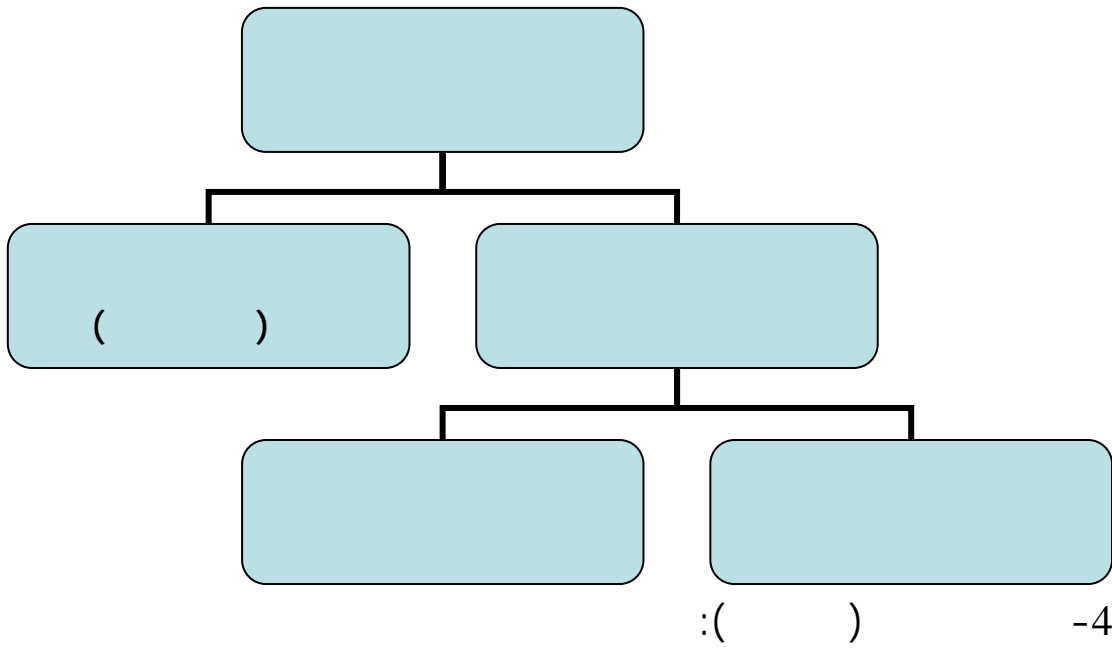
:() -1



:() -2



:() -3



·
:
() ()
()
()

”;

1 ”

: 2.2

: 1.2.2

2

() ():

.364/4

.188/1 - 1

182/2 - 2

1

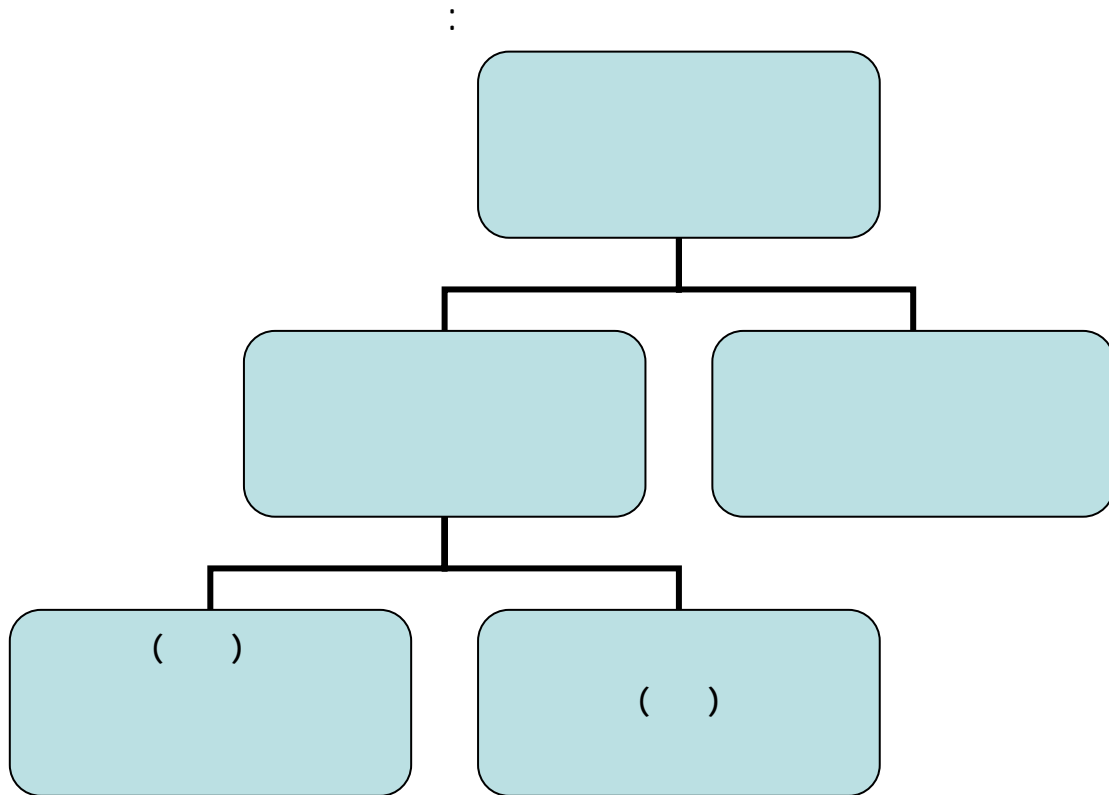
" : ()
 .² "
 ()³
 . () :
 4
 ()

5

6

() : :⁷
 . () :
 8
 . () :

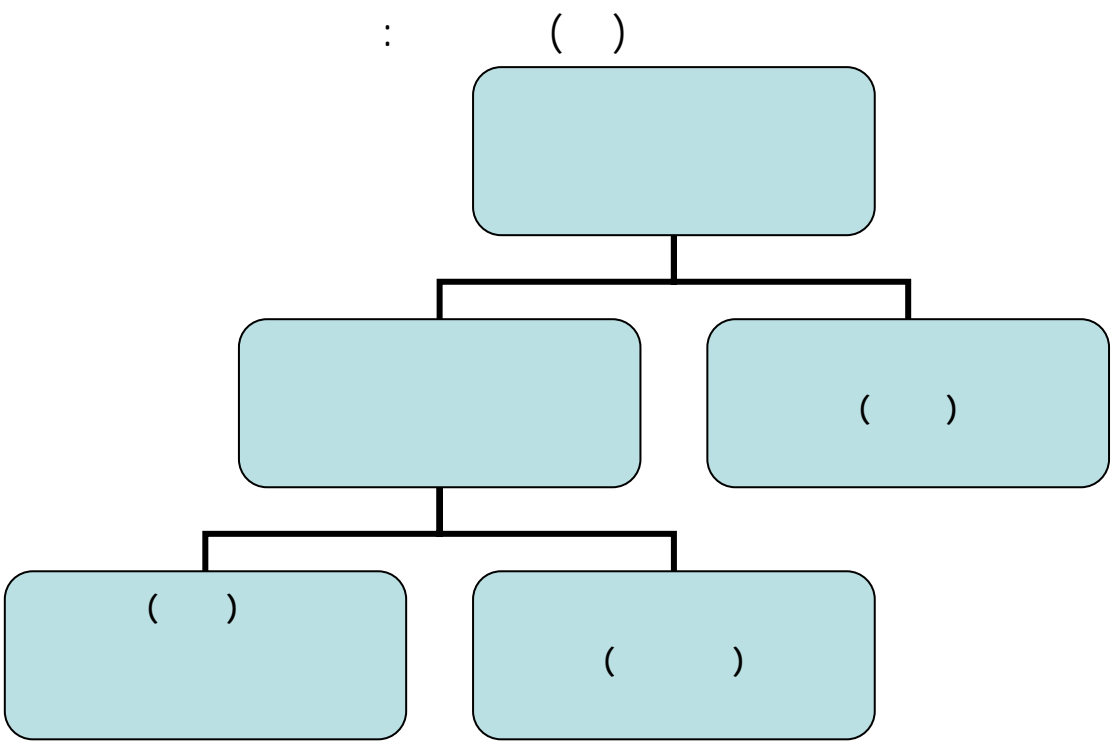
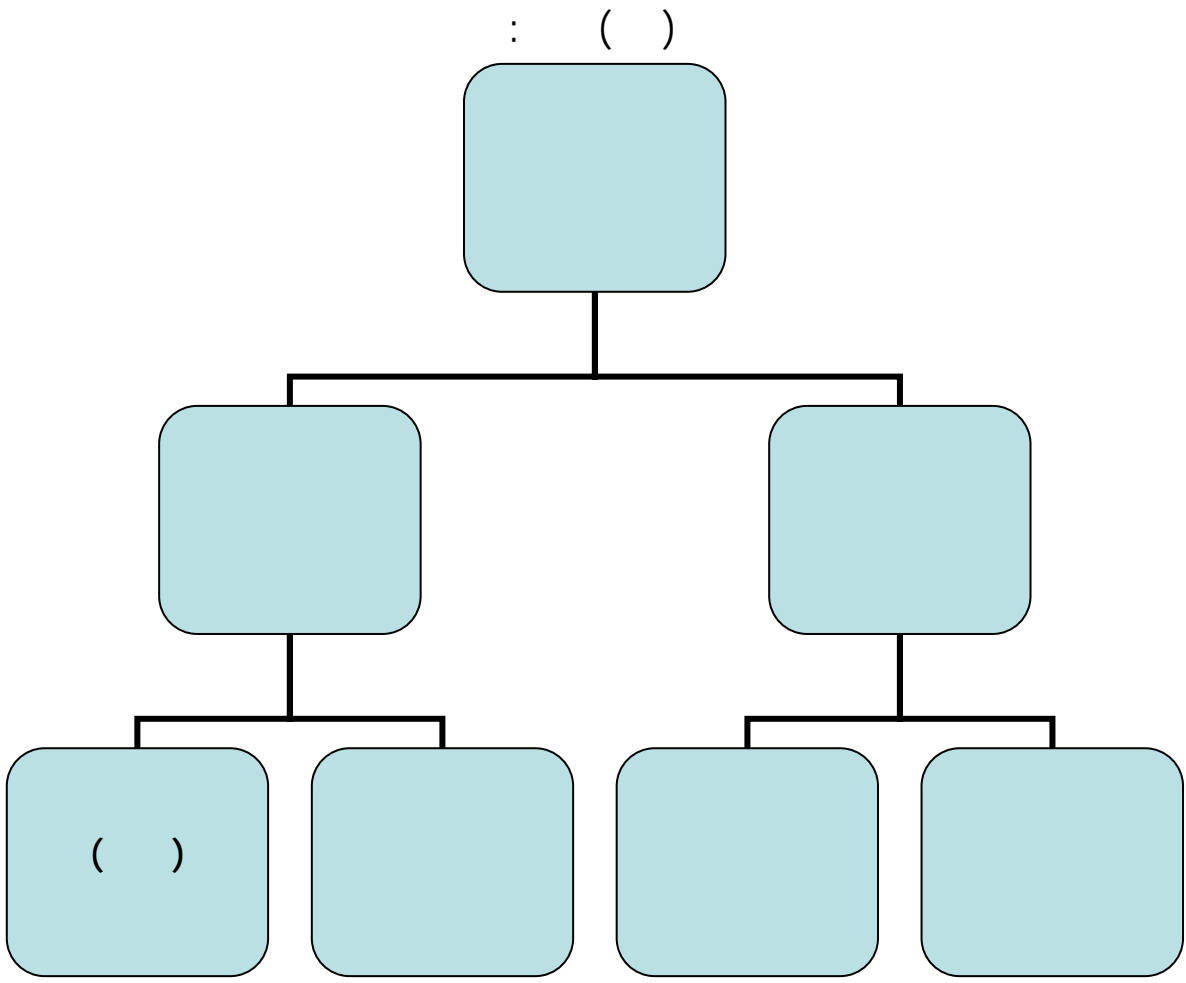
		<u>.177/2</u>	- 1
		.23	- 2
		.271,270/2	- 3
		.330/1	- 4
.491	106/7		- 5
	.257/2	10/4	- 6
	.123/7		- 7
		.7,6/2	- 8



()

.()

() () : 1



()

()

·
"

:

1 "

()

()

):²

()

.(

()

()³

):

.(

4

.180

- 1

.24

- 2

.278/2

- 3

.340/1

- 4

() : ¹

. () ()

²

() ()

() ³

—
".4
.

—
."
()

.510/1

84/4

—
- 1

.468·467/11

- 2

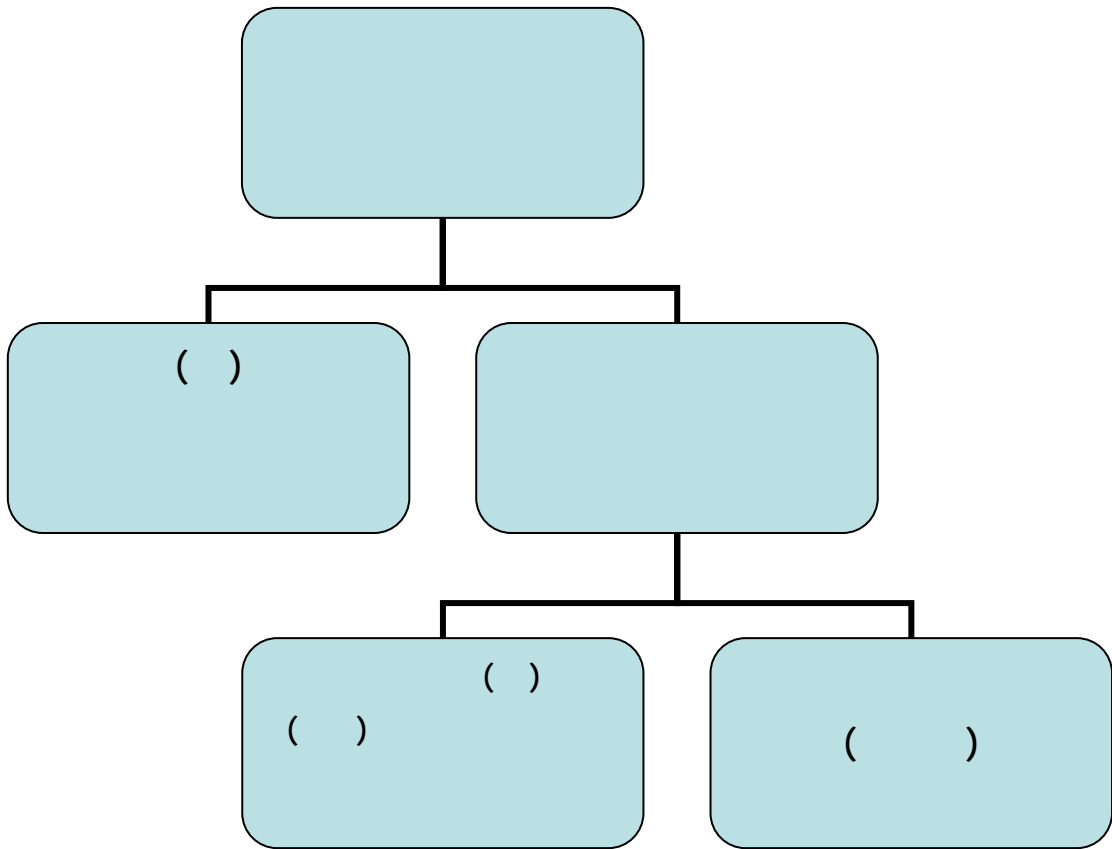
.169·168/4

- 3

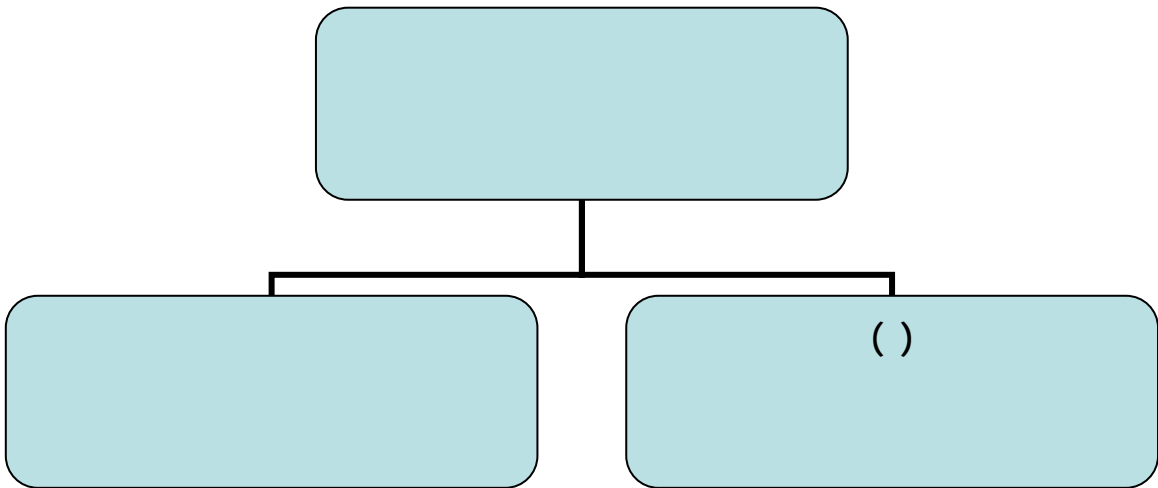
.182/2

- 4

:



:



():

"

()

() 1 "

.

.

: 2.2.2

²

()

³(

) :

):

()

⁴ (

()

:

⁵ ()

:

.208/2

.169•168

- 1

159

- 2

.103

- 3

.539/2

- 4

.269•268/3

- 5

1

:

()

.

.² ():

3

.⁴

):

.⁵ () () ()

:

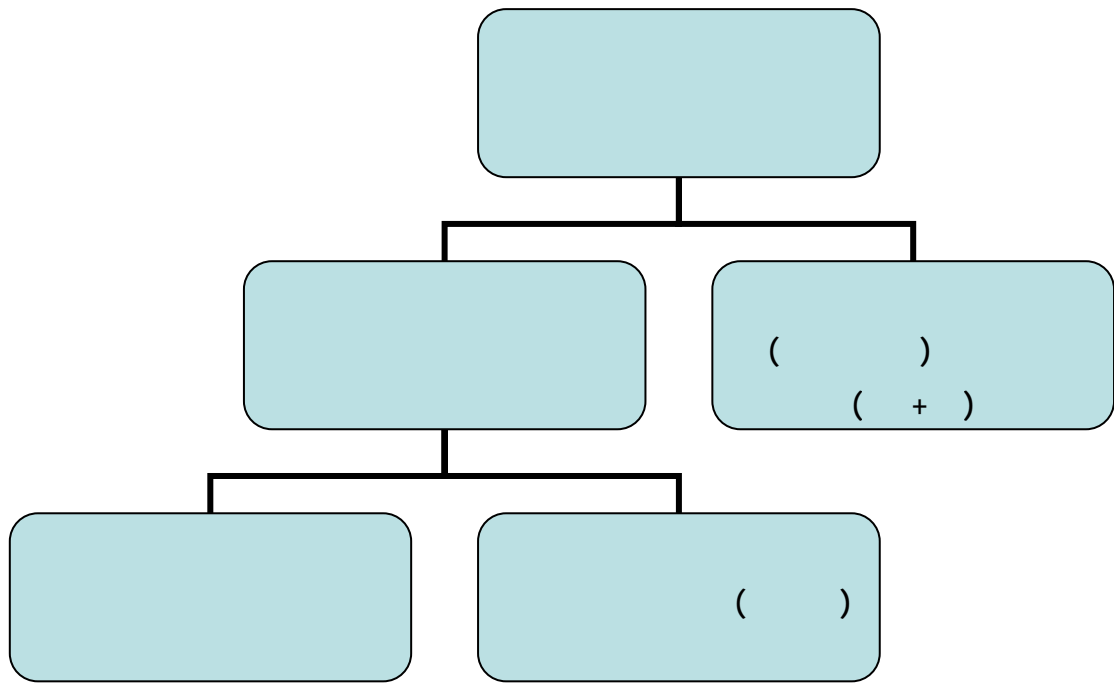
6

()

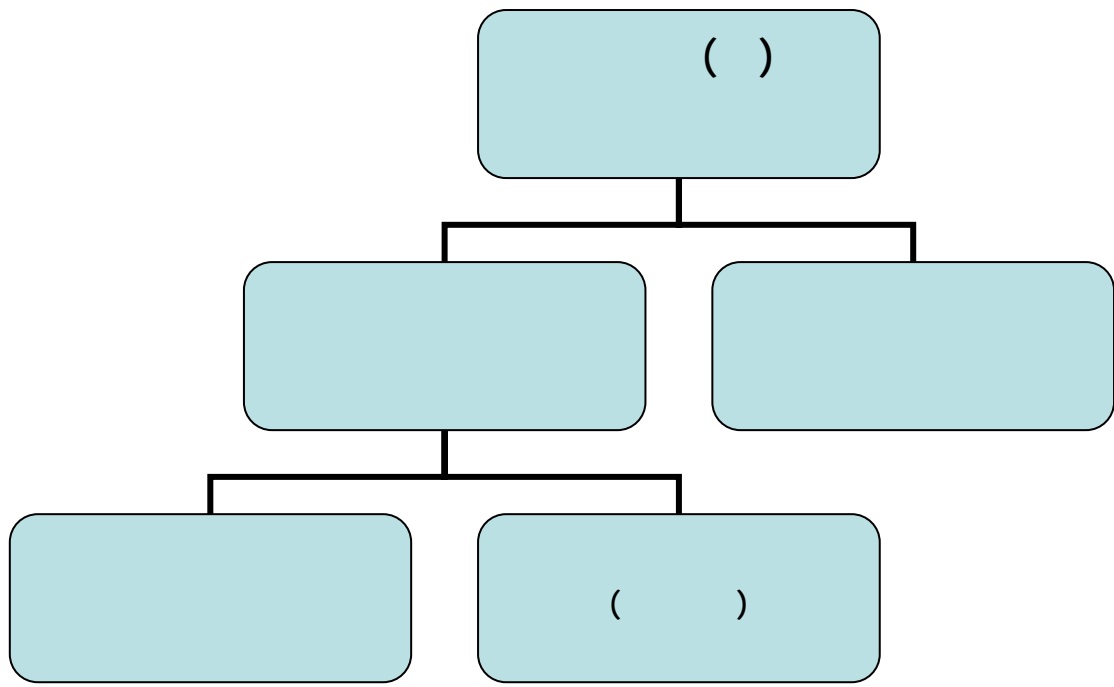
():

:

.306/4	- 1
.476/8	- 2
.147/5	- 3
.360/10	- 4
.254/1	- 5
.284	- 6



1 () ()
 .()
 :



():

()

"

. 1 "

: **3.2.2**

:

. 2

()

":

. 3 "

()

():

() ()

()

. 4 "

"

. 5 "

":

.90	- 1
.417/2	- 2
.91	- 3
.209/1	- 4
.225/1	- 5

.¹ ()

()

() ()

() () ()

":

.² "

()

.³

()

() ⁴ ()

.

5

:

6 () ()

.

7

.

	<hr/>	
	.225/1	- 1
.586/6		- 2
	.529•528/2	- 3
	.543/2	- 4
	.206-204/1	- 5
	.70/2	- 6
	.32/3	- 7

()

.¹ ():

()

()

: **4.2.2**

.²

()

):

.³ (

:

.⁴

.225/1	- 1
.363•364/2	- 2
.18	- 3
.461/2	- 4

) :

.¹ ()

.²

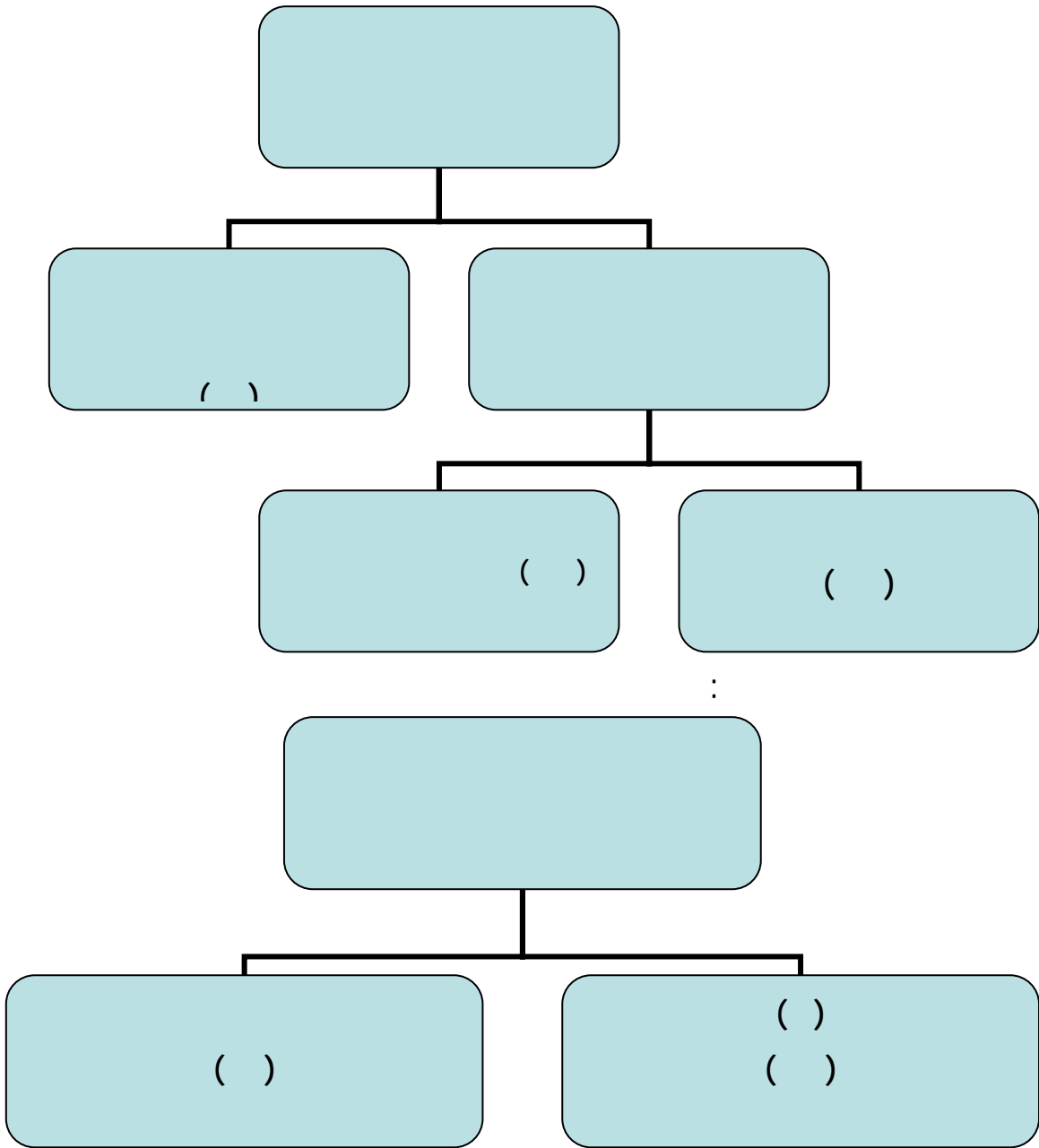
()

.⁴

3

:

.6/3	- 1
.22/4	- 2
.438/7	- 3
.32/15	- 4



*

*):

()

.¹(

.3

- 1

)

.¹ (

()

2

()

.³

:

()

() () ()

.

()

()

():

):

.⁴ (

.439/2 - 1

.326/2 - 2

50/14 - 3

241/8 209/3 187/2

.284 179/7 66/21

.18 - 4

1

()

()

2

3

4

5

6

:

):

7 (

()

		<hr/>	
		.199/1	- 1
		.148/1	- 2
		.148/1	- 3
		.344,343/1	- 4
	12/3	148/1	- 5
		.130/1	
344,343/1		422/2	- 6
.210/3		43/4	
		.422/2	- 7

.

.

.

.

:

- . (1
- . (2
- . (3
- . (4

: **1.3**

.

1

624

88/6

- 1

.1187/2

()
 $\frac{1}{2}$ ():

()
 ()

5 4 3

: 6

7

()

		185/4	- 1
97/3	.179/1	15/5	
		.165/3	- 2
		.197/1	- 3
		.241/1	- 4
		.327/1	- 5
		.383/2	- 6
.338/2	78/3	383/2	- 7

):

.¹ (

² ()

()

: ()

()

³

()

⁴ ()

.()

():

()⁵

⁶

()

()

()

⁸

⁷

358/34

.505/1

300/1

.409/14

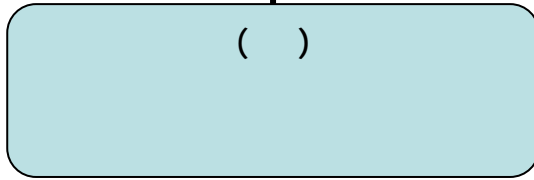
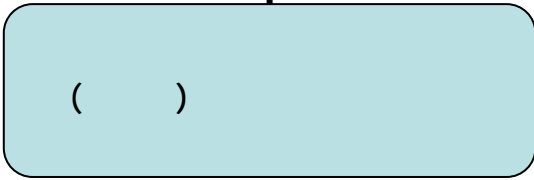
.100	- 1
.336/1	- 2
.450/1	- 3
92/5	- 4
235/8	
466/2	- 5
.505/1	
.132/2	- 6
.657/2	- 7
	- 8

()

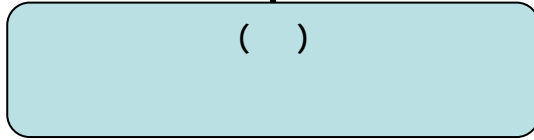
:

...

:



:



):

()

()

.¹(
2

3

.45	- 1
.259/1	- 2
.310•309/1	- 3

)

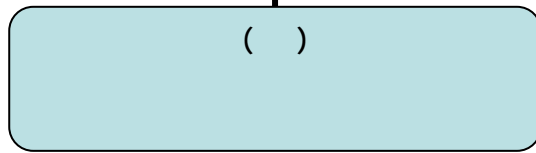
. ()

(...

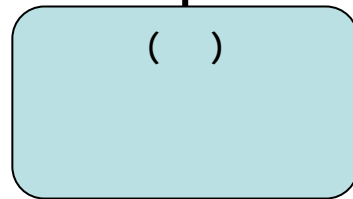
:

...

:



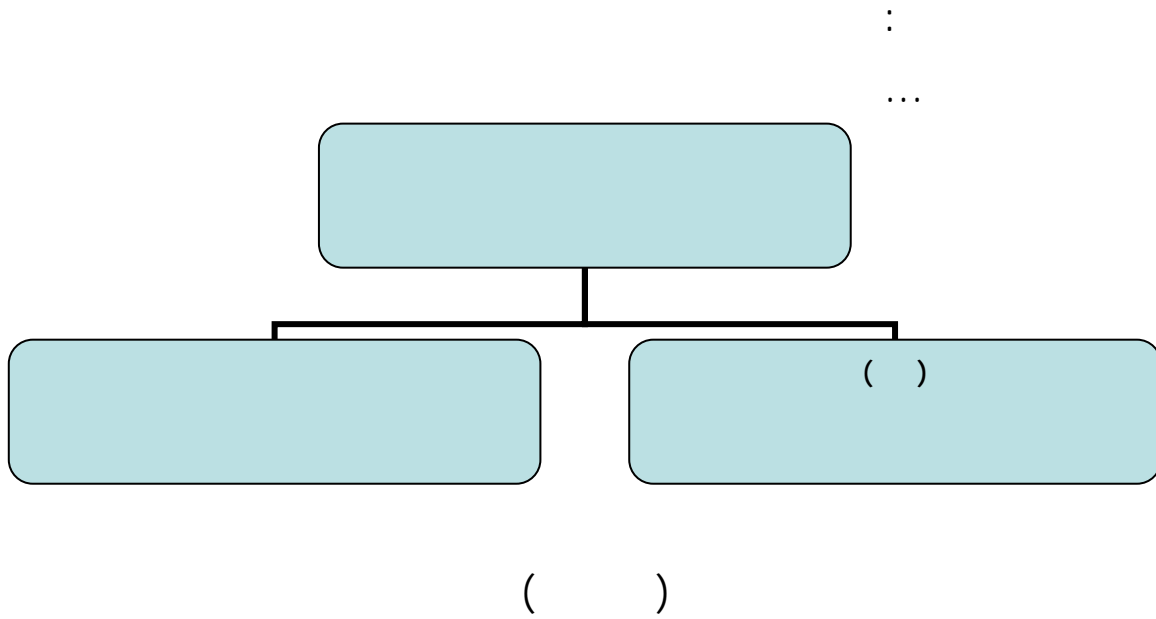
:



()

.

:



.

⋮ ⋮ ⋮ ⋮)

¹ (

)

² (⋮ ⋮ ⋮ ⋮

⋮ ⋮)

409/1

494/3

575/3	- 1
.179/2	
147/6	- 2
	.178/2

()

¹ (...)

.

2

4 3

):

⁵ (

()

7 6

:

:

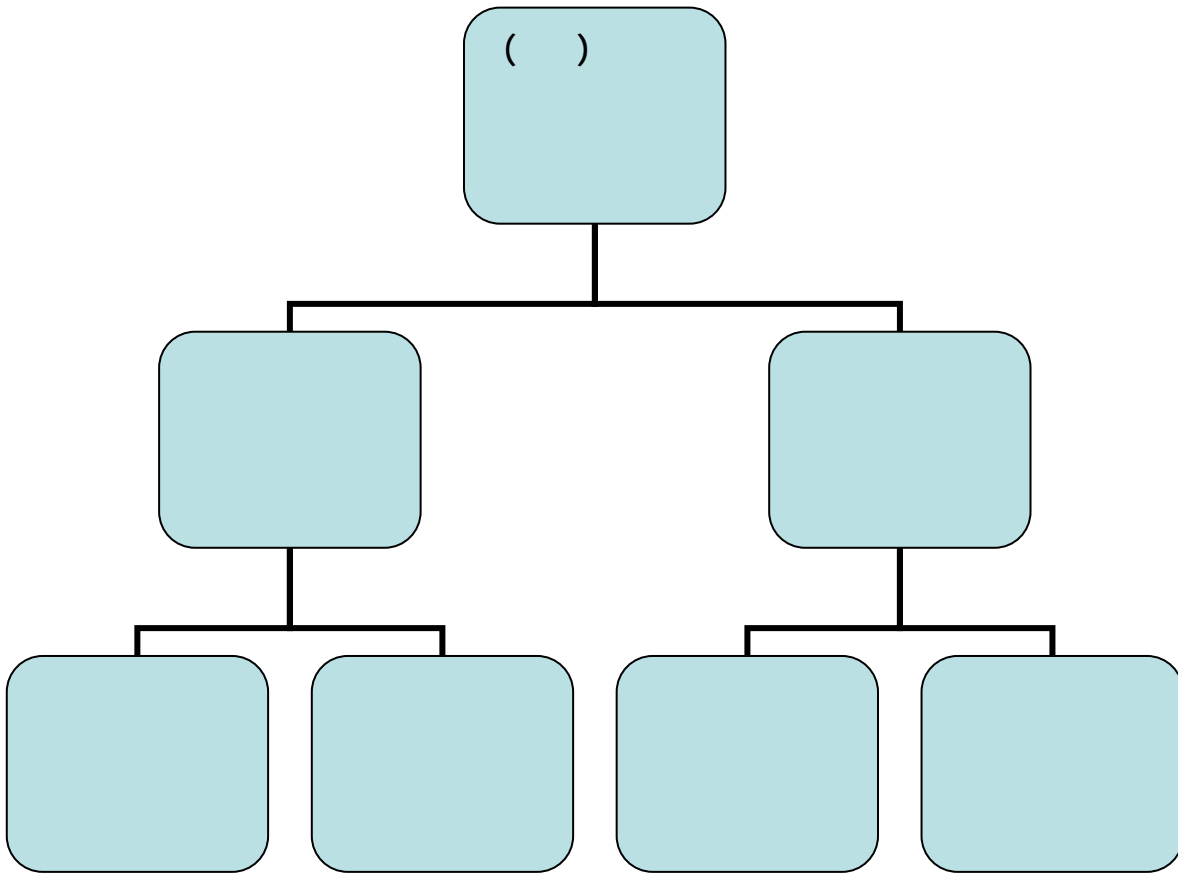
.

:

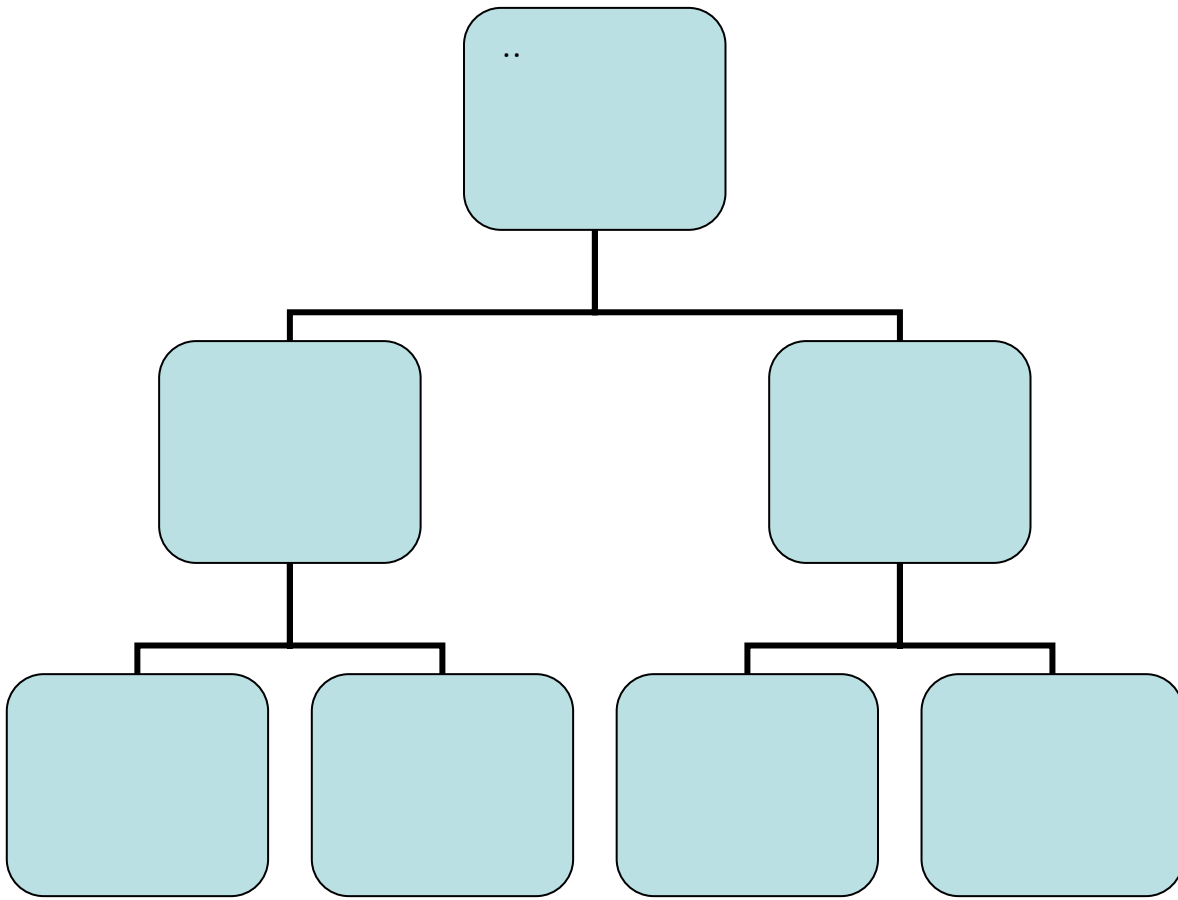
.()

		200/	- 1
.231/1	185	254/2	244
		.193/6	- 2
		439/1	- 3
		.269/1	- 4
		.61	- 5
		.346/2	- 6
		.470/1	- 7

:
()



:



1 ()
 .() ()
)
 () 2 ()
 3 () () ()

	334	182	- 1
	.44·43/5	91/11	
27/1		145	- 2
.356/8	359/5	536	
		.158/2	- 3

()¹
 .² () ()

: **2.3**

.³

):

.⁴(

()

()⁵

):

()

.⁶(

7

()

()

):

:

()⁸

	.679/2	- 1
	.151/2	- 2
	.410	- 3
	.138	- 4
	.150/1	- 5
	.135	- 6
	.83·82/1	- 7
.15/1	144/2	- 8

1 ()

.()

:

2

.()

3

()

()

4

()

()

()

()

:

144/2

411/1

- 1

.15/1

.122/1

- 2

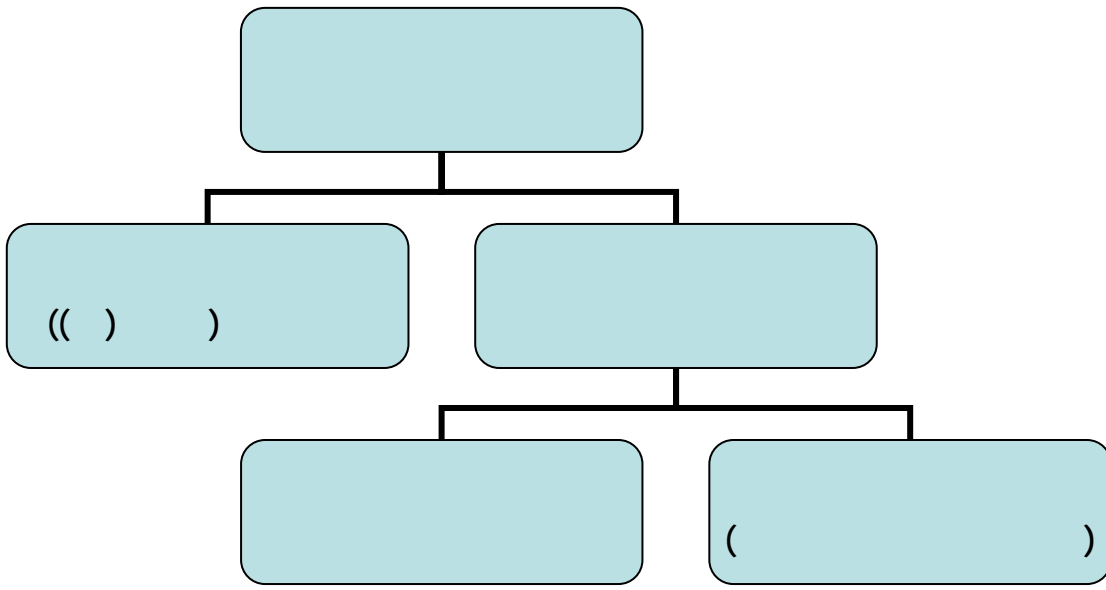
.82/1

- 3

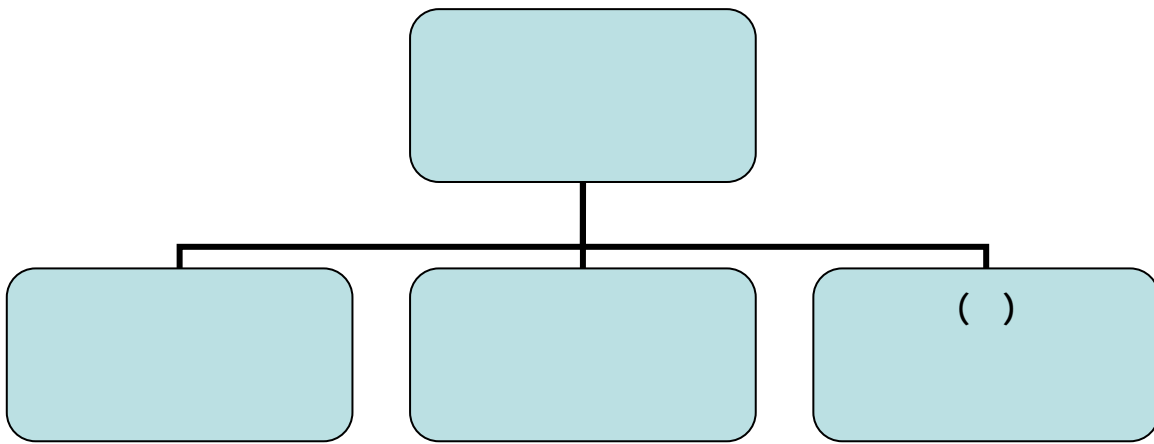
.117/1

- 4

:



:



()

()

()

.()

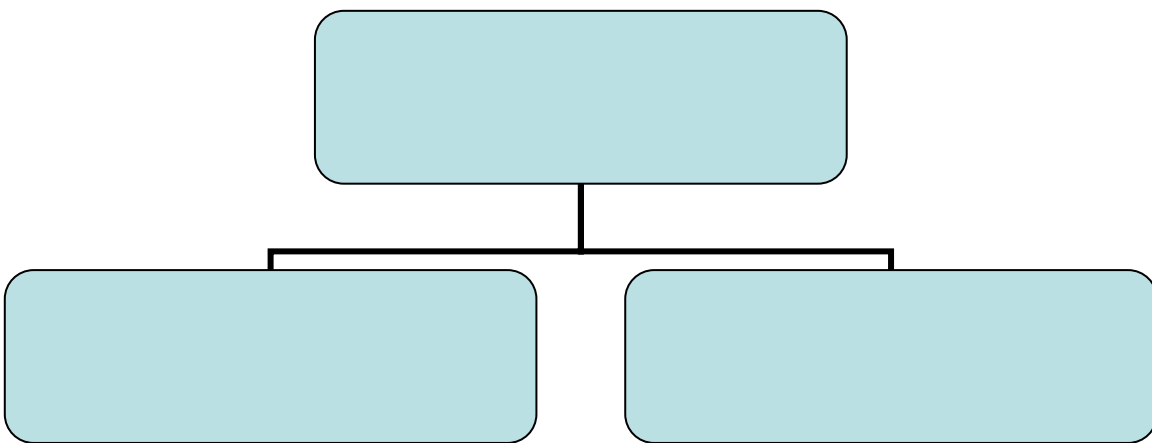
):

.¹ (

.100

- 1

()
 :
 3
 4
 ()
 2 (*)¹
):
 5
 .():



		<hr/>	
		.283/2	- 1
		.53•52	- 2
386/2		233•225	- 3
	.52/2		60/3
.159/1		216/1	- 4
		.348/1	- 5

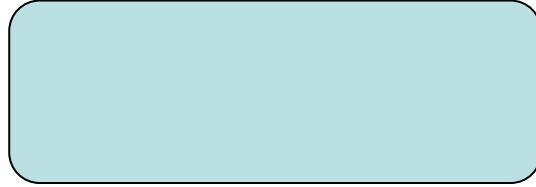
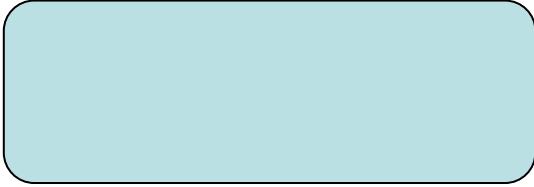
-1

:



-2

:



):

.(

):

(

.¹

²

()

.()

()

.335

- 1

.193/4

520/1

- 2

()

.²

(): 1

()

()

3

()

"

.⁴ "

5

()

.
):

(
7

()

()

.⁶

):

.⁸ (

193/4

39

- 1

.241/7

52/7

.505/2

- 2

.526/1

- 3

.195 ()

- 4

.7/12

- 5

.143

- 6

.289/2

- 7

.142

- 8

:

1

:

()

()

2

() ()

4

3

(.

): () ()

:

5 (

()

()

.360•359/1	- 1
.36/2	- 2
.241/4	- 3
.544/1	- 4
.141	- 5

.¹

):

²(
()

:

):

() ³(
() ⁴

():

() () ⁵

()

():

⁶()

()

.():

():

⁷

()

.177

133·132/2

- 1

.201

- 2

.10

- 3

.465/2

- 4

.13·12/3

- 5

343/15

381/4

- 6

.486/7

275/1

63/24

- 7

.133

270/2

.()¹ ()
2

():

.():
3

()

():

4 (): ()

— —

*

*):

5 (

6 ()

7

():

393

381/4 - 1

.275/1

486/7

.384/3 - 2

.1124/2 - 3

.36/3 - 4

.3•2•1 - 5

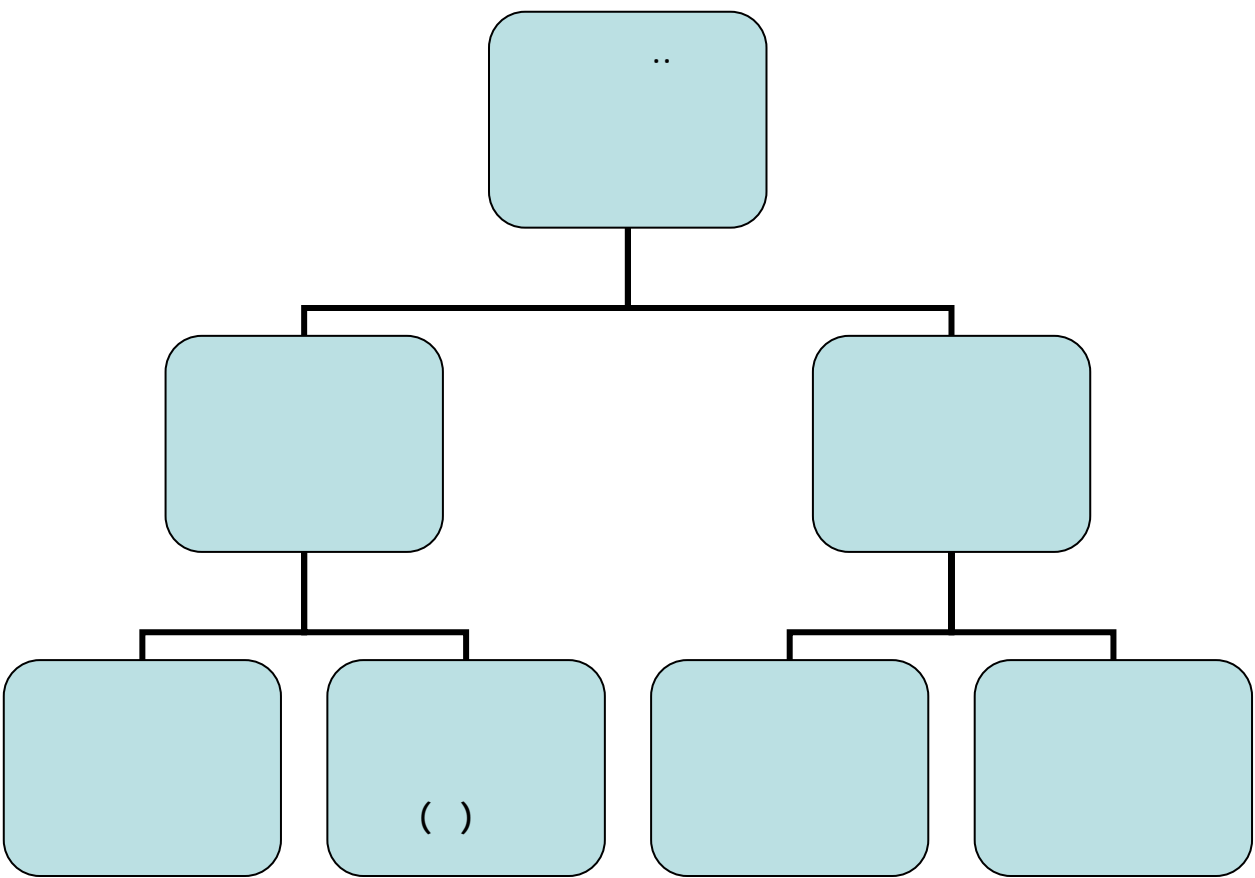
.459/2 - 6

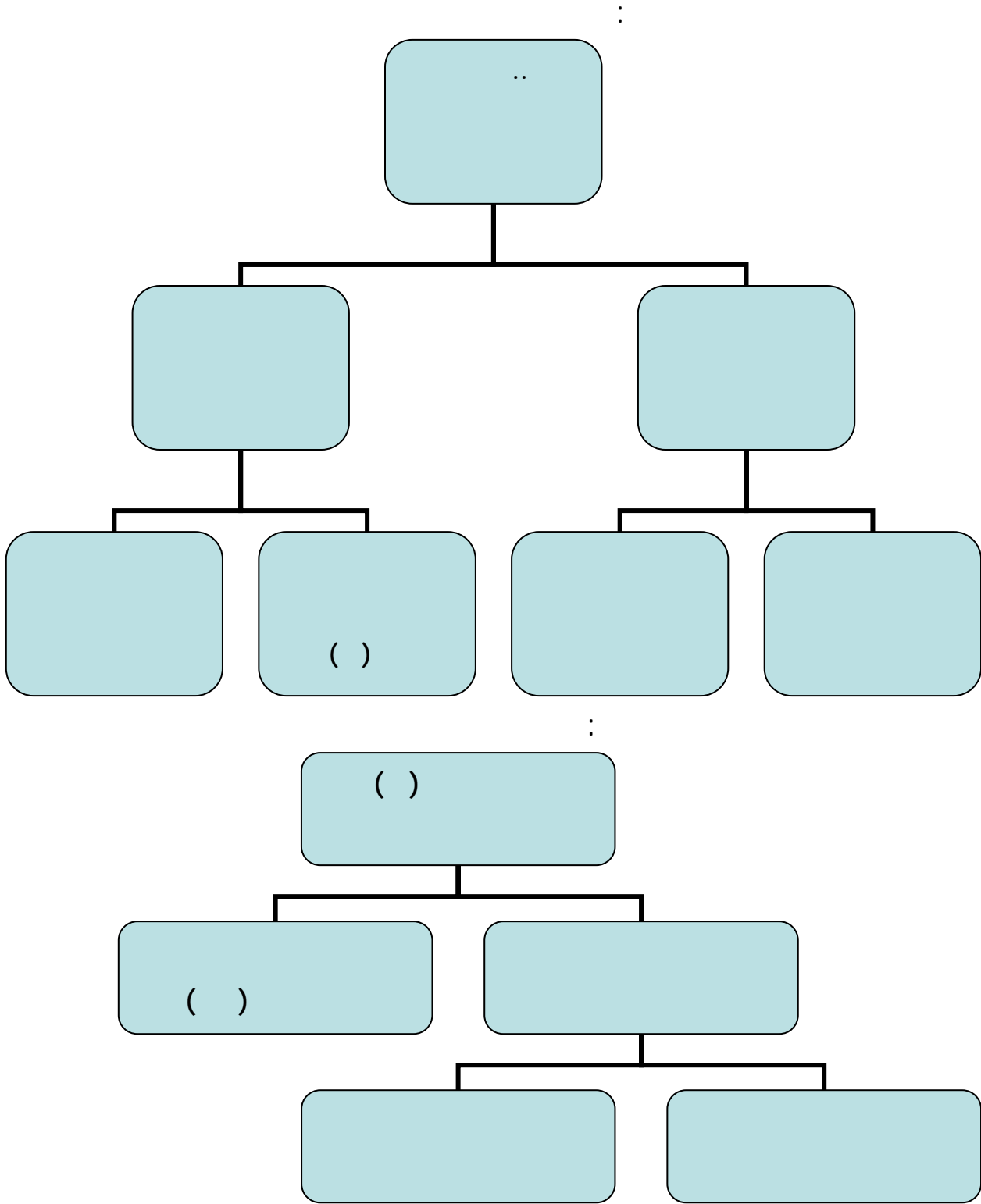
.5/3 - 7

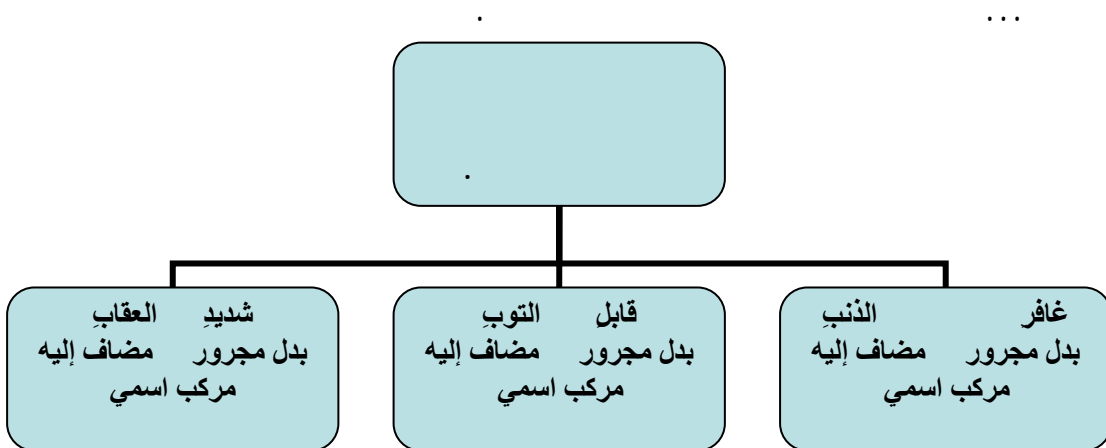
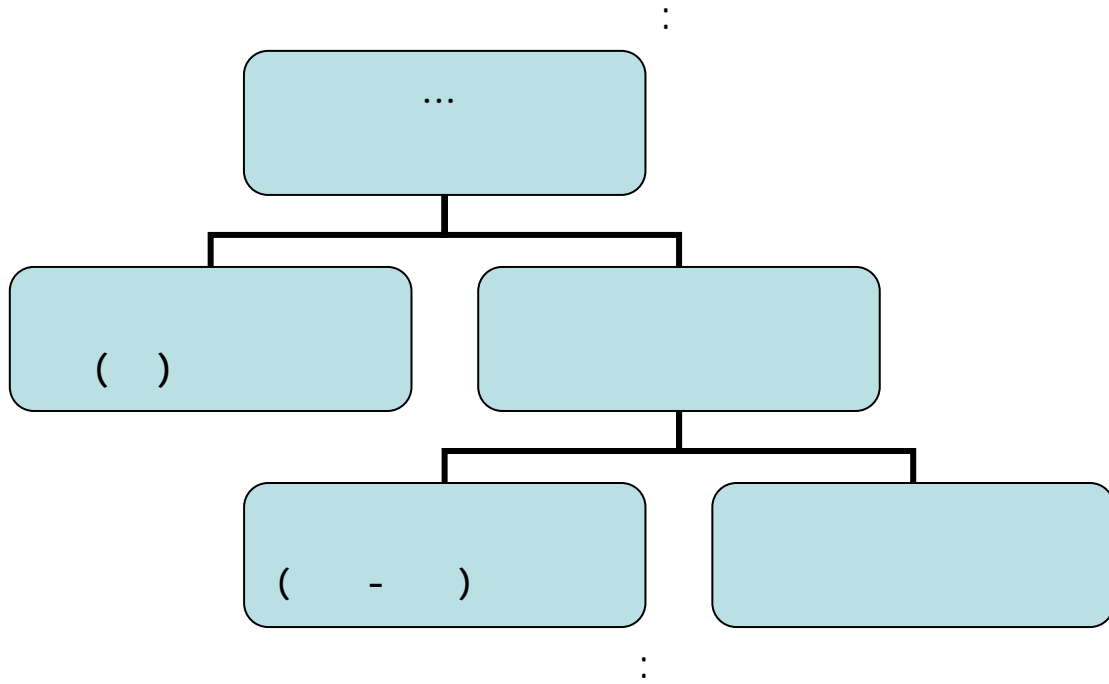
$\cdot^1 ($ $)$:
 3 $:$ $^2 ($
 4 \cdot
 $5 ($ $*$ 6 $*$ $)$:
 \cdot

	.261•260	- 1
	.172/5	- 2
.108		- 3
	.5/3	- 4
	.15	- 5
435/2	198/2	- 6
	.125/2	155/2

⋮
⋮







()

():

1
()

2

.1115/2 - 1
.359/3 - 2

1

: **4.3**

2

()
.3 (...

):

4

()

5

()

6

):

:

262/1

.19/4	- 1
66	- 2
.587	
.154	- 3
.218/1	- 4
.243/1	- 5
.185/1	- 6

.¹ (

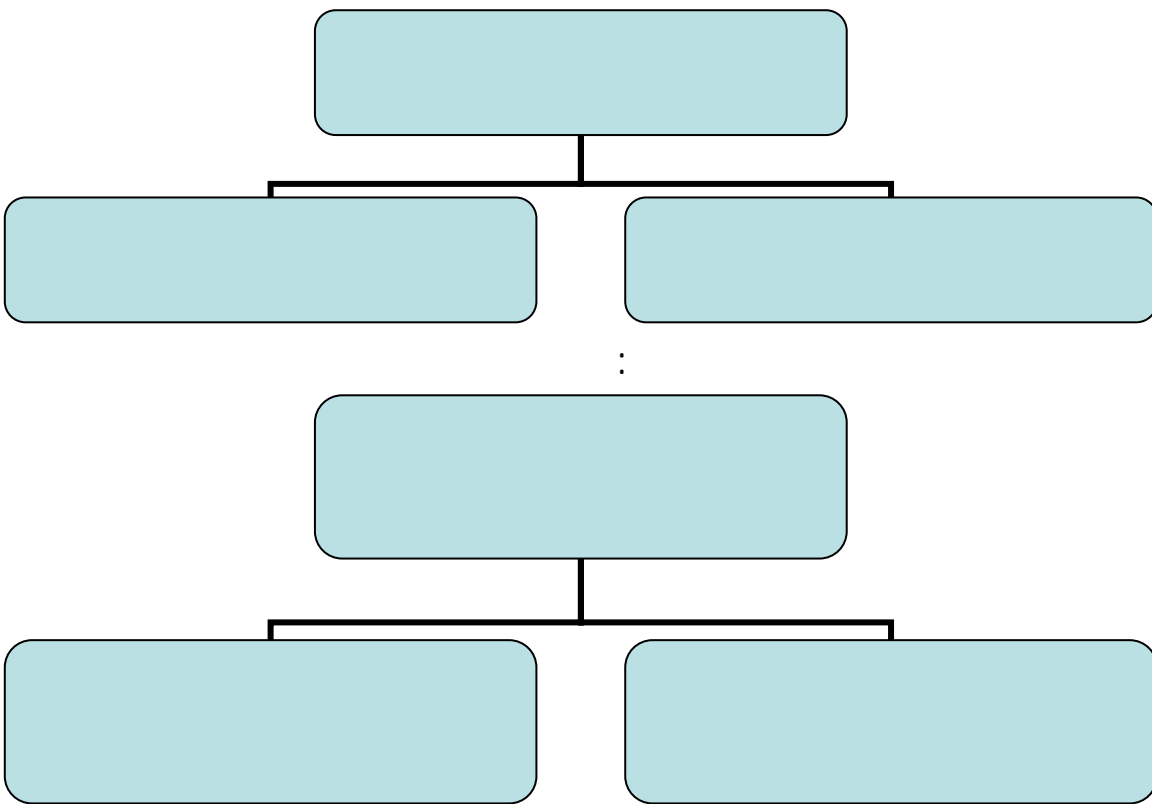
3

2

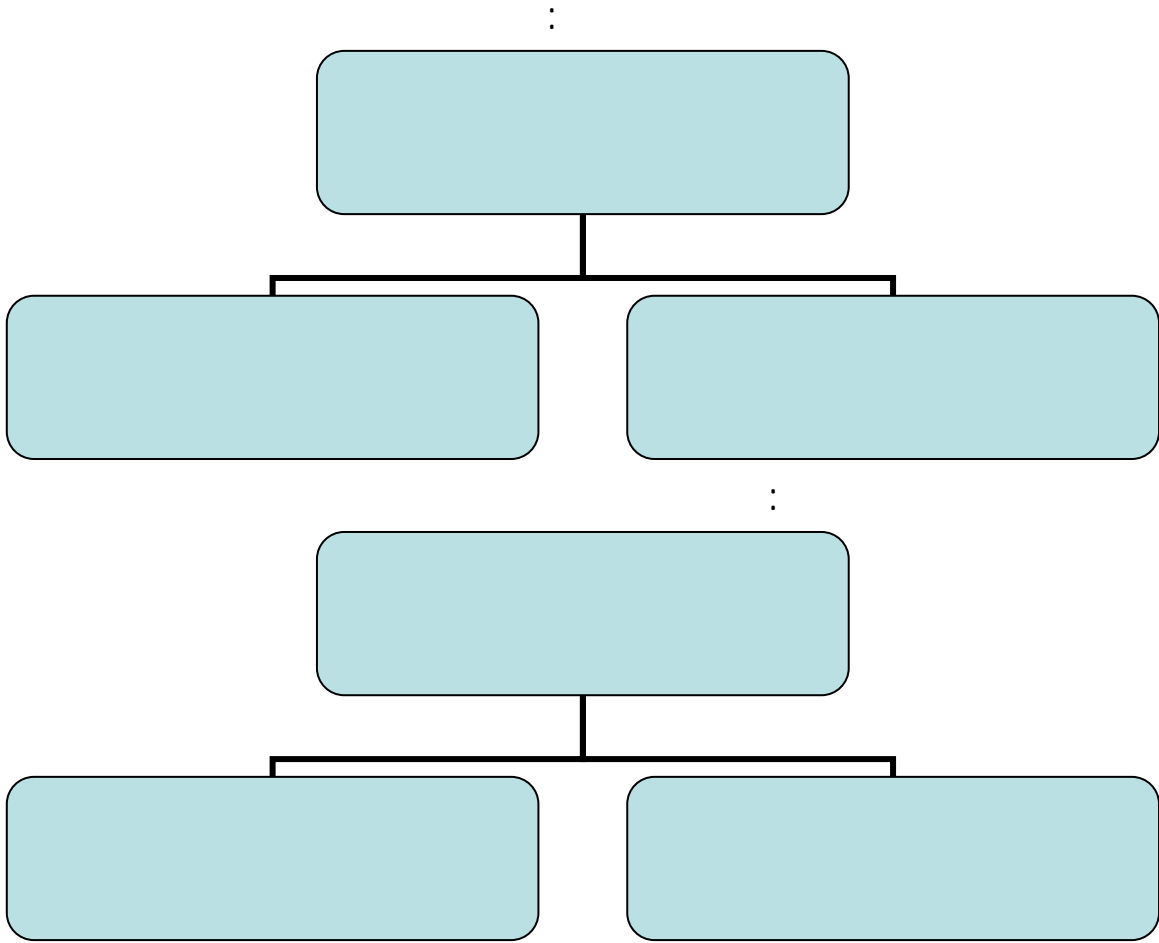
4

.

⋮



.24	- 1
.185/1	- 2
.242/4	- 3
.303/1	- 4



()

$\frac{1}{3}$ ()₂ :

.() : ()

.21	- 1
.382/2	- 2
.98/2	- 3

():

.

()

1

.

2

.

.248/2 - 1

.79/2 - 2

:

. (1)

. (2)

. (3)

. (4)

: **1.4**

()

1 "

"

):

.² ():

()

):

.³ (

.127/3

- 1

.369/1 - 2

.81 - 3

()¹

()

()²

.

): ()³

()

()⁴

⁵

()

):

()

()

()⁶

:

()

()

()

()

⁷

.

			<hr/>	
			.357/2	- 1
	.213·212/1	34		- 2
			.357/2	- 3
			.24/2	- 4
34			390/1	- 5
	.276/2	195·194		213·212/1
			.24/2	- 6
35			390/1	- 7
	.276/2	195·194		217·216/1

...)

.()¹ (

()² (...)

3

. () ()

5 4

.()

()

()

:⁶

:⁷

		534/1	121/5	- 1
.412/1		347	109/12	- 2
	109/2		.62/2	
			.710/2	- 3
		.80/9		- 4
		.179/2		- 5
		.80/9		- 6
		.179/2		- 7

)¹

...

.(

()

2

()

()

():

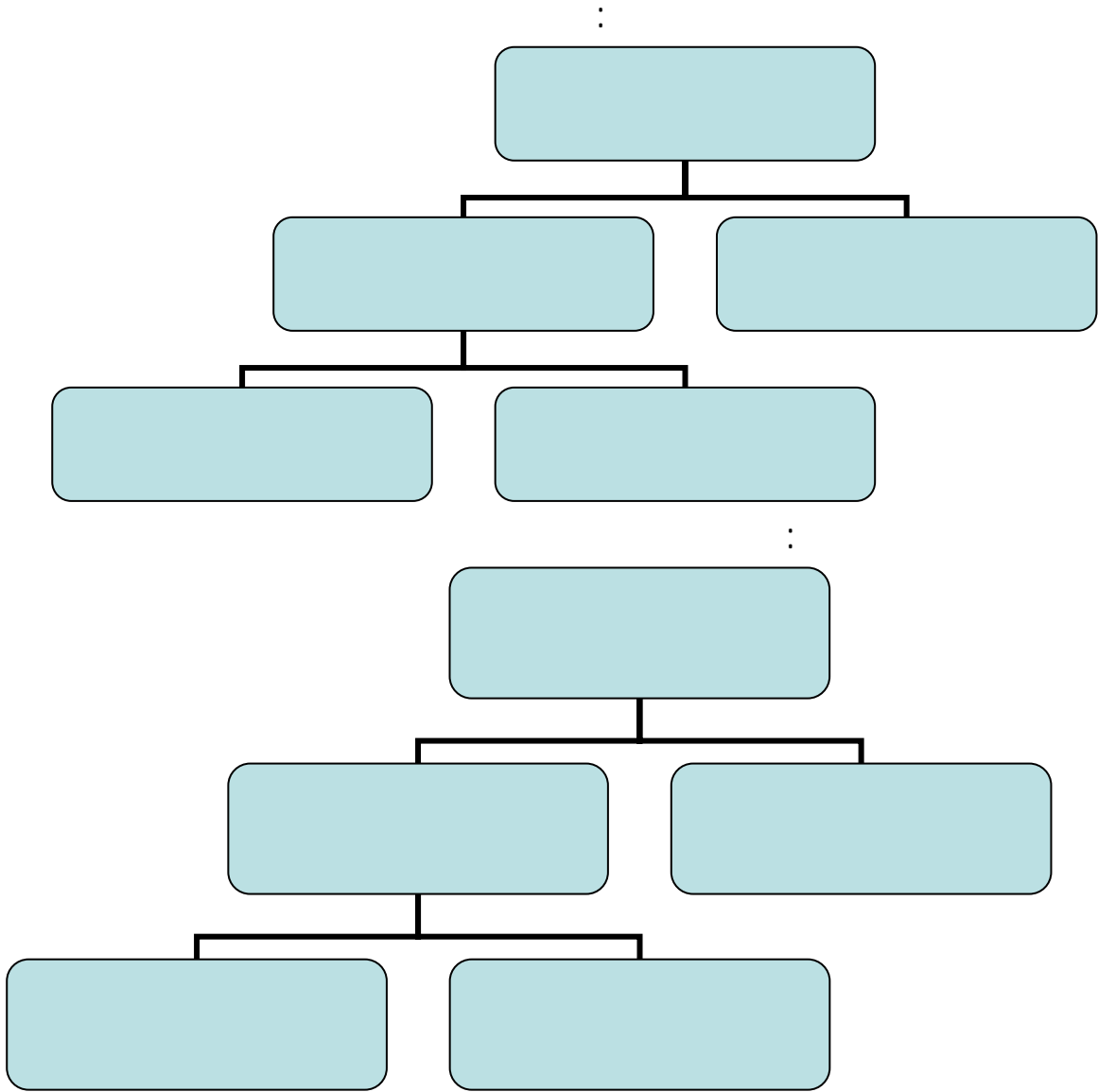
:

.

³ ()

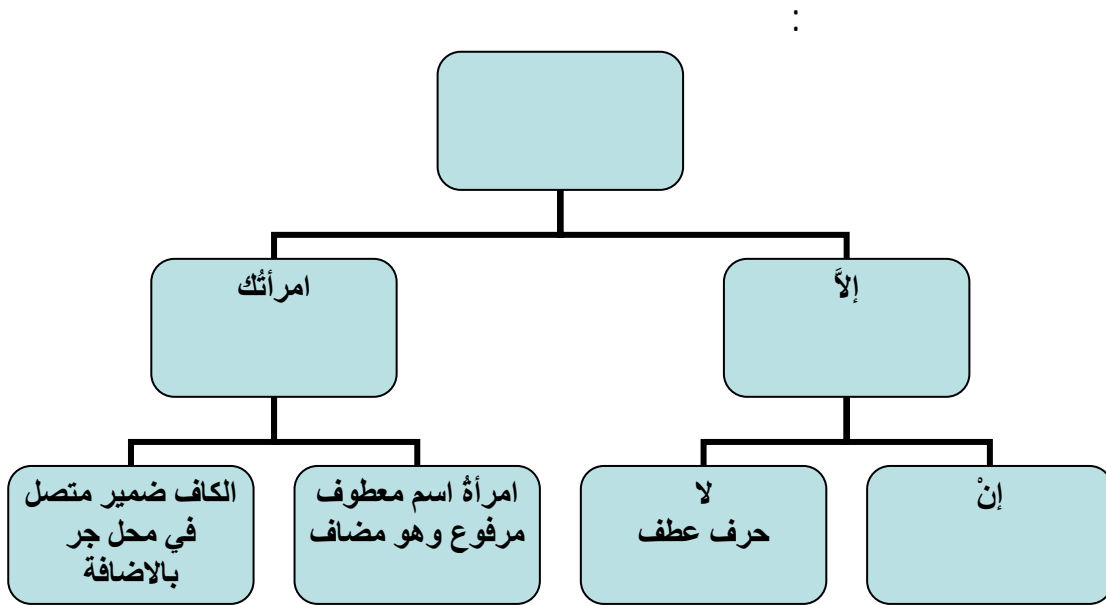
:

.118/4	- 1
.83/2	- 2
.75	- 3



()

.



()

() ()

()

() ()

(-)

()

):

.¹ (

()

2

()

.95

- 1

.245•244/1

- 2

)		()	1
	. ² (
	()		
.		()	3
. ⁴ ():
.	()		5 ()
⁶ ()			
()	()		()
			7
:			8
		()	
		<hr/>	
		.284•283/1	- 1
		.7	- 2
		.284•283/1	- 3
		.1	- 4
	93/2	126	- 5
	396/1	237	
	.137/1	168/3	
481		384/1	- 6
		.181	
	.93/2	418/1	- 7
	343/5	345•344/1	- 8
		.234/1	

:

:

()

1

()

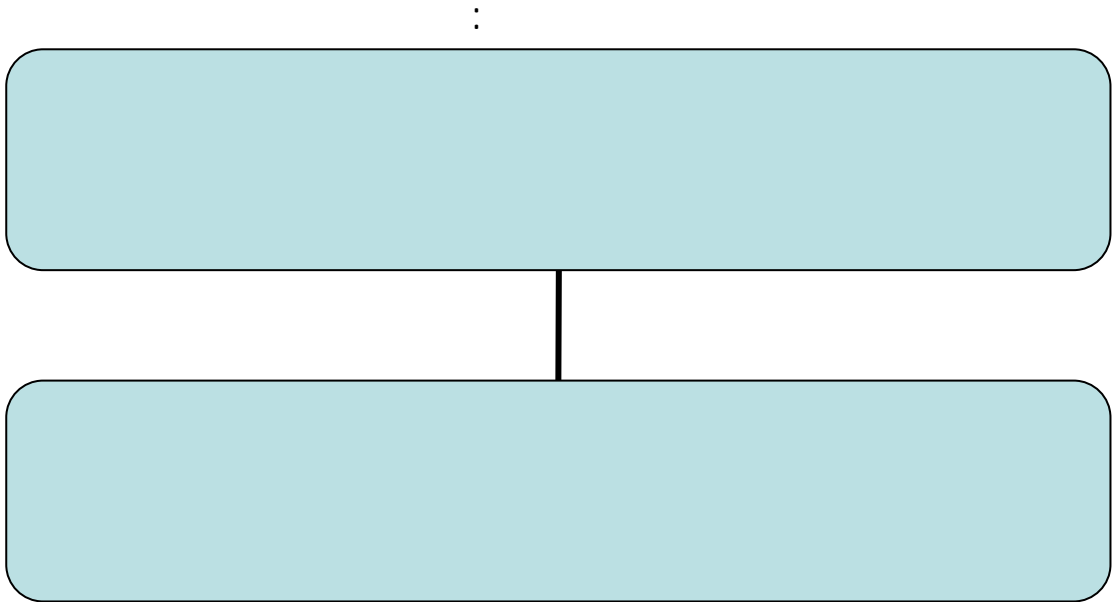
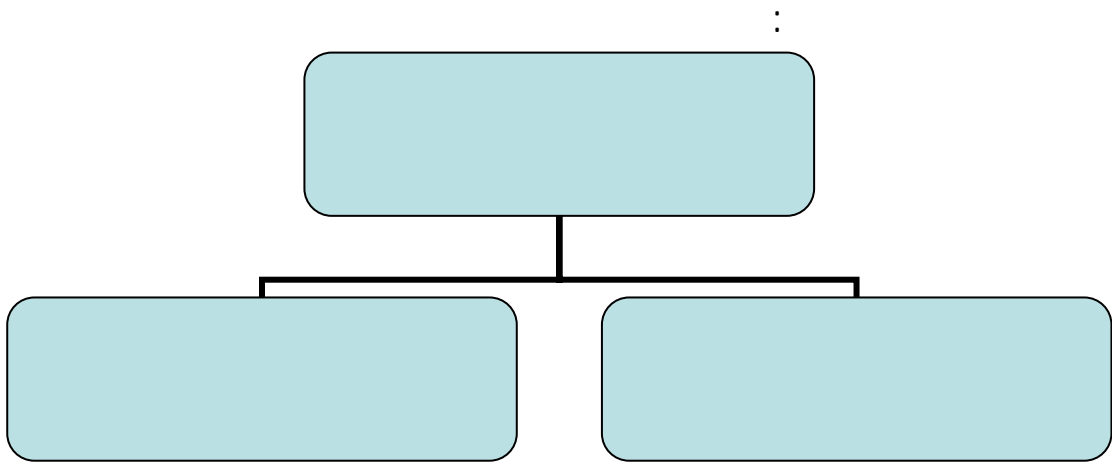
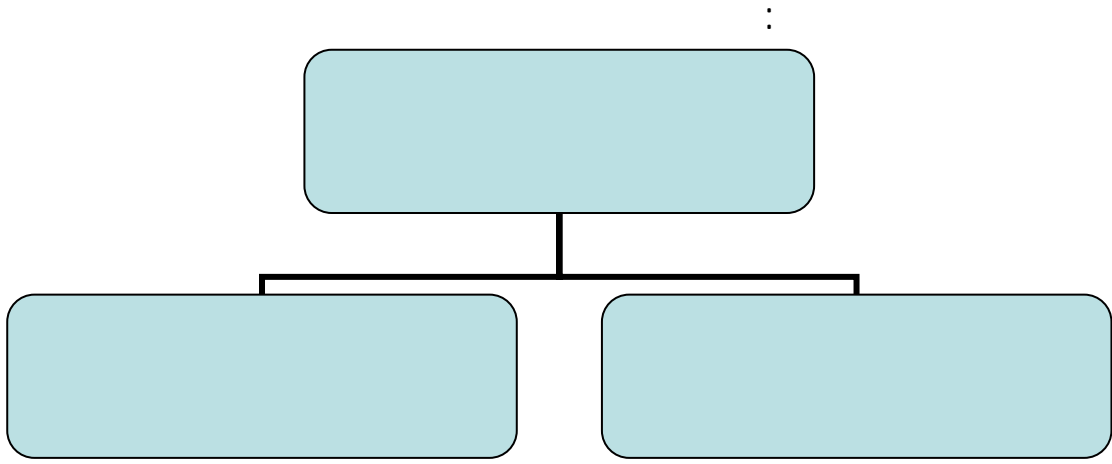
():
()

):²

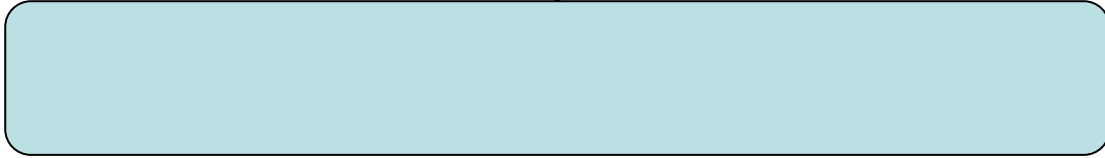
.³ ():

:

..89/2	- 1
.332/2	- 2
.22	- 3



:



: 2.4

.¹ () () :

-
() -
 .² () ()

.³ () ()

.339/3

101/2

- 1

.1175/4

- 2

.154

- 3

.¹

.²

()

.³ ():

(!) :

.()

):⁴ ()

.⁵ (

⁶

: ():

⁷

.⁸

	- 1
	.119
.155	- 2
.17	- 3
.18	- 4
.19	- 5
.218/19	- 6
.95/5	- 7
1272/2	- 8

):

.1 (

.! : : : 2

.! ! : : 3

!

() 4

.

5

()

()

) ()

() () ()

) ()

.(

.26	- 1
.395/2	- 2
.139/2	- 3
.293/2	- 4
142/1	- 5

: **3.4**

.¹

():

.² ():

()³

.

4

() ()

: ()

() ()

. ()

()

()

⁵ ()

.70/2 62/2 - 1

.4 - 2

.298/3 - 3

.298/3 - 4

776 377 - 5

337/30

700

375/5

1 ()
 ()

.

4

3

2

()

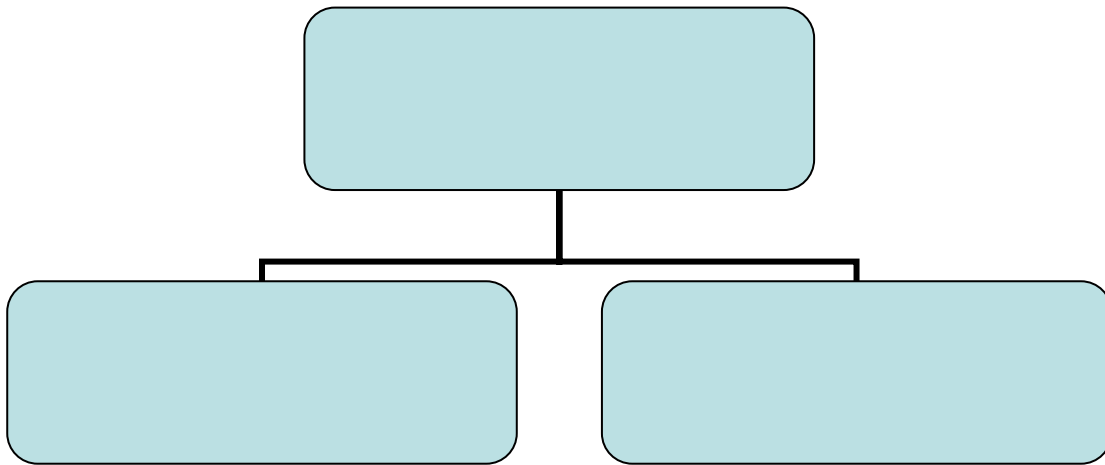
5

():

:

:

-1



219/30

- 1

.375/5

366/3

390/2

.239/20

- 2

1308/2

- 3

527/8

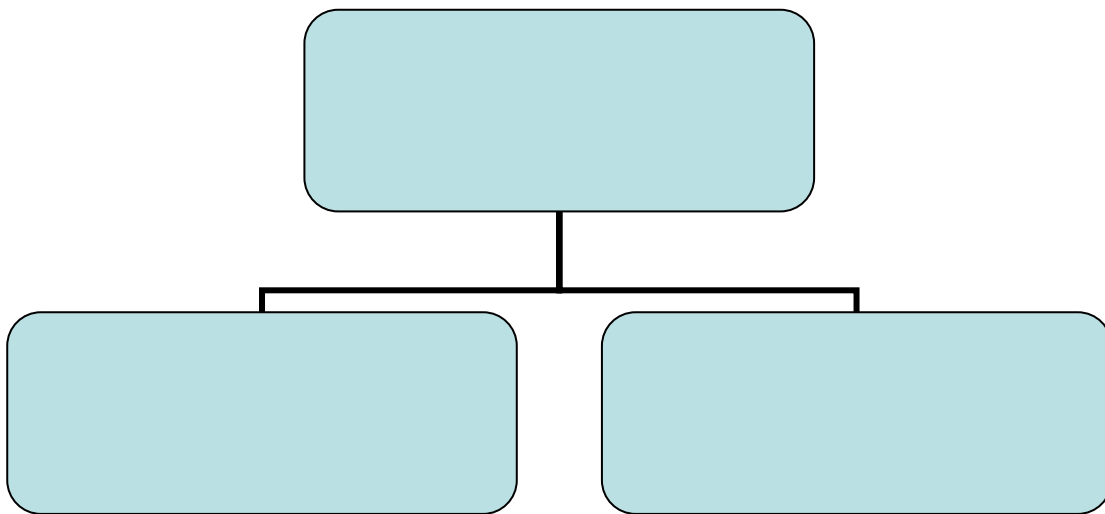
- 4

.70/2

- 5

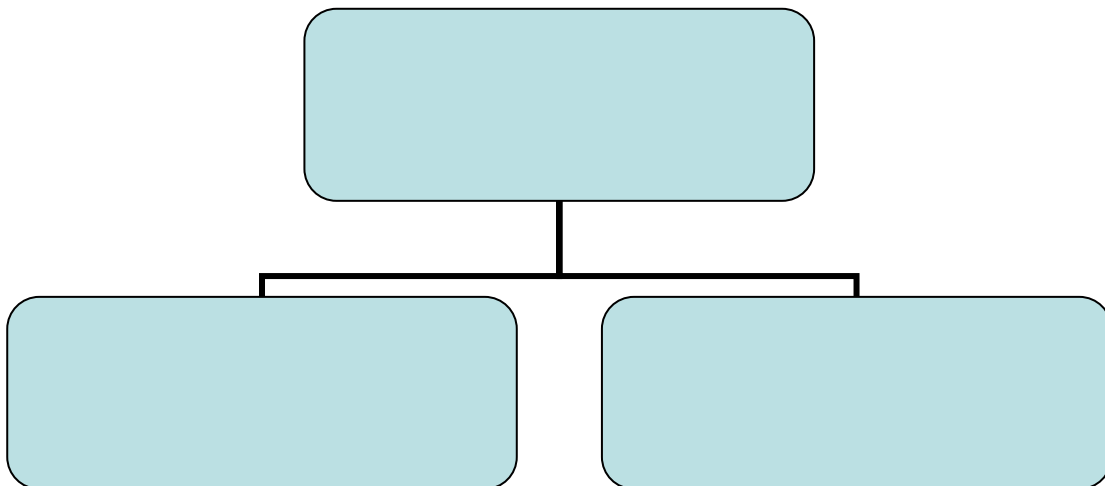
:

-2



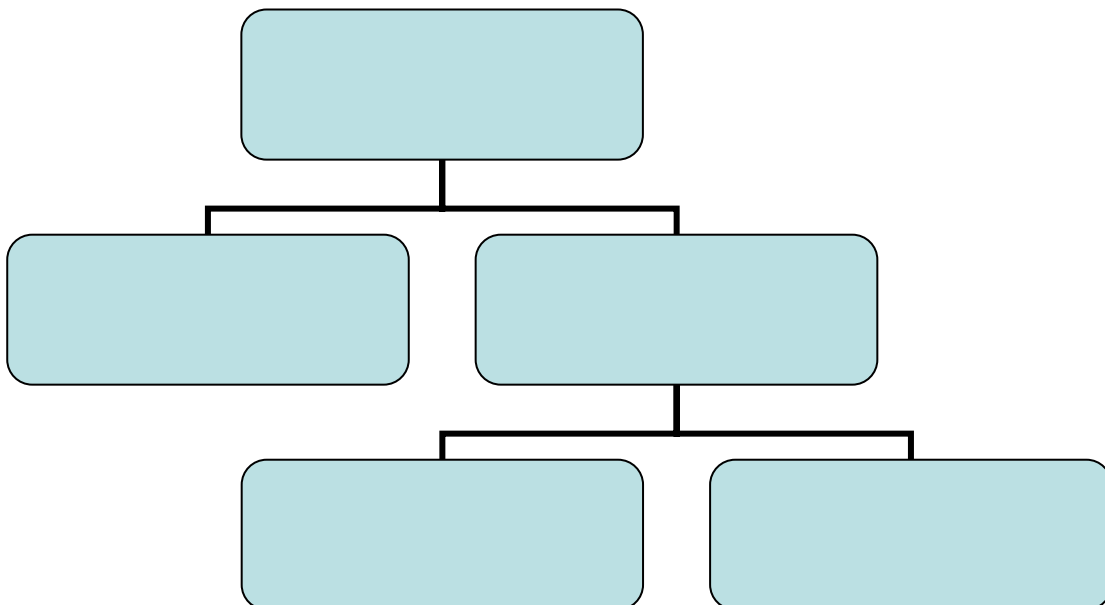
:

-3



:

-4



* 1

):

.² (

:

()³

-1

-2

-3

.⁴

()

⁵

()

⁶

-1

-2

-3

.⁸

⁷

:

.5 - 1

.6 - 2

.519/2 - 3

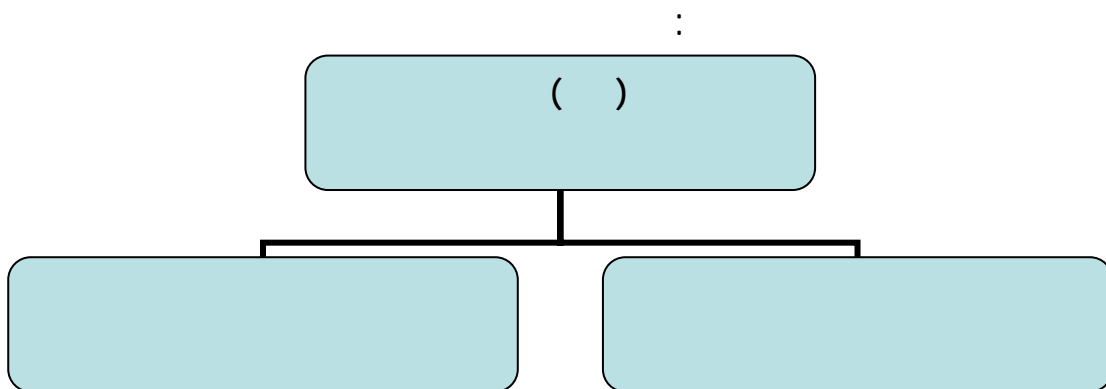
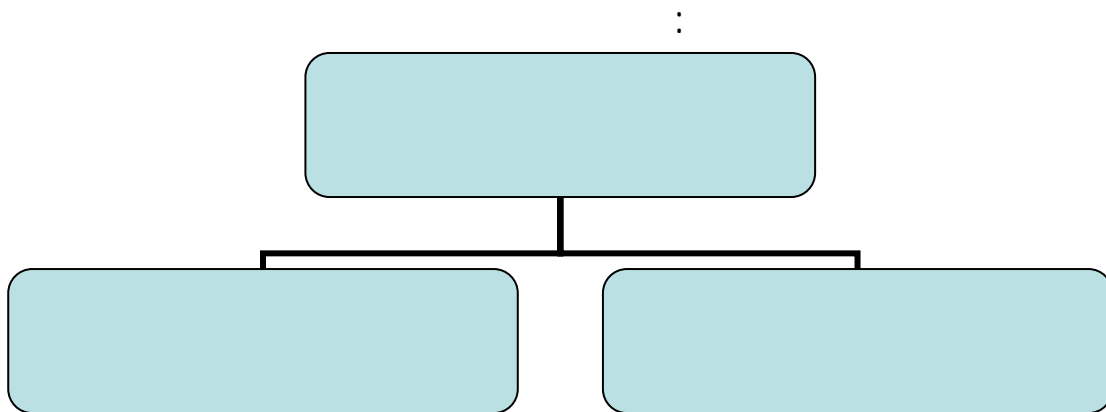
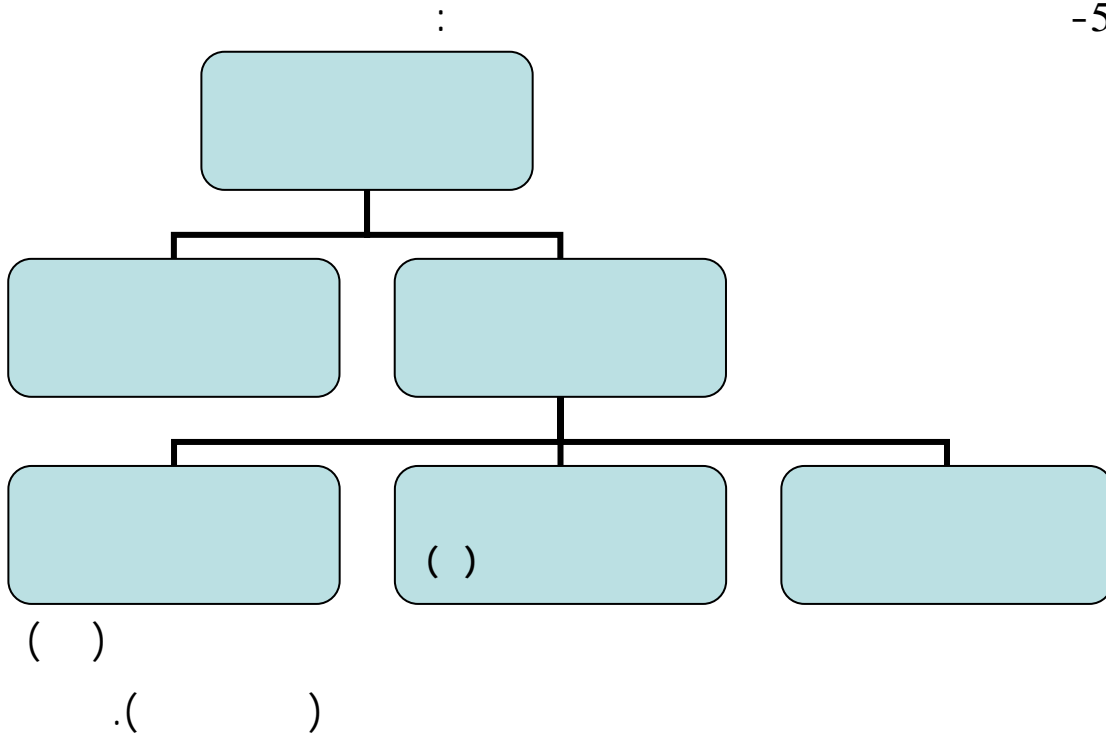
.127 - 4

.215/3 - 5

.1258/2 - 6

.126/19 - 7

.64•63/5 - 8



() ()

:



: **4.4**

:

.¹

): ()

.² (

()

3

()

()

.131

46/2

- 1

.34

- 2

.433/2

- 3

) () 1
 . ()
 2 ()
 () ()
 3 () () ()
 . ()
 4 () ()
 . :
) () 5
 . ()
 () 6
 :
 () ()
 . ()
 ()

		.306/2	- 1
	173/2		- 2
	.545	78/20	494
175/2		144/4	- 3
	.173/2		
		.163/3	- 4
		.1020/20	- 5
		113/7	- 6

):¹

(. *):

):

(
):

):²
3

(
):⁴

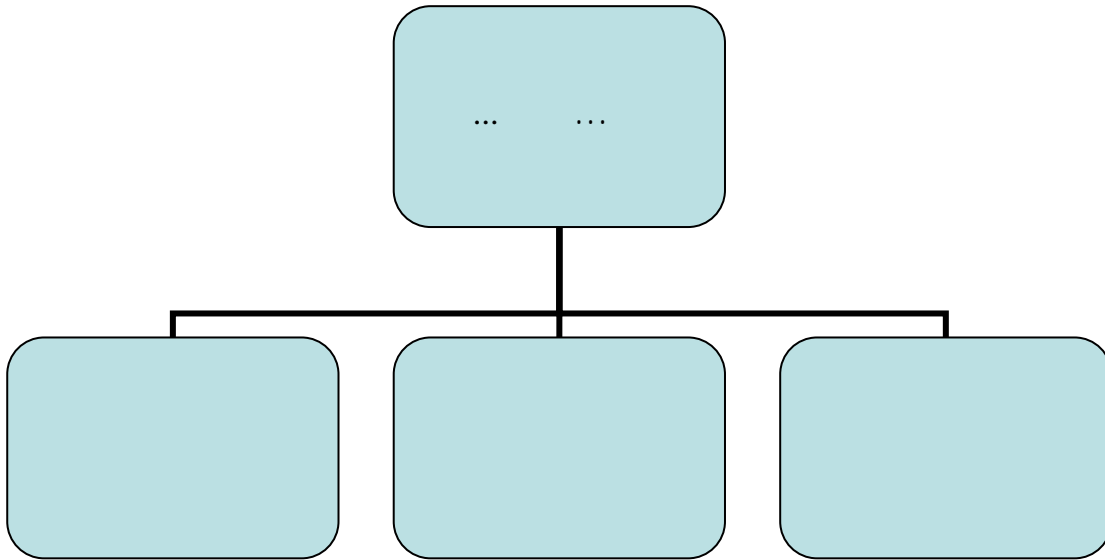
()
()

5

.()

:

.50/7	- 1
.35	- 2
.274/2	- 3
.332*331/1	- 4
.492/1	- 5



.

):

.¹ (

2

()

()

3

() ()

)

(

() ()

.6	- 1
.421/1	- 2
.421/1	- 3

() ()¹ ()
 () ()²

()

.110•109/2

77/9

- 1

.636/2

- 2

);¹

.(

" "

.141

- 1

.¹
350 - 300)

.² (

()

()

.³

()

.():⁴

()
5

()

() " "):⁶

:

()

120

73

- 1

.73/2

.308

- 2

.119

- 3

.245

- 4

.157/1

- 5

.269/1

- 6

()
.(

: **1.5**

() () ()
.¹

...):

" "

.² (...

):³ ():
() () () () ()

.⁴

" " ...)

.215	- 1
.65/1	- 2
.119	- 3
.232·231/1	- 4

" " : " "

2 () .¹ (:

() .³

() .()

()

() 5 4

⁶ () : ()

()

.⁷

):

.⁸ (

	324	43/2	- 1
		.281,186	
		101,79/1	- 2
		.20	
		.185,76,13/7	- 3
	.579/2 (100)		- 4
		.409/1	- 5
		.32	- 6
110/3		24/2	- 7
		.27	
.30			- 8

1
): ()
 3 () 2 ()
 () () ()
 () ()
 4
 () 6 5
 .()
 : **2.5**
 7
):
 .
 .⁸ (

.441

	- 1
.46	- 2
.228/2	- 3
.109	- 4
.363•362/1	- 5
.231•230	- 6
.38/15	- 7
.20	- 8

() : ()
 1
 ...):
 :
 (2
 3
 4
 6 5
 : 3.5
 7
 .
 (): 8 (): :
 9
 .

.119,148/1	521/2	- 1
	.150/2	- 2
	.400•124	- 3
	106•103•102/1	- 4
	.33	
	.189/3 105/2	- 5
	.226•97•78•21•8	- 6
	.241	- 7
	.184•183	- 8
	.158/1	- 9

.¹ ():
):
 .² ():
 " " ...):⁴ ³ (" "
 .():
 ...) ⁵ ():
 .⁶ (...)
):
 .⁷ ():
 8):
 .():

.3	- 1
.464/2	- 2
.68	- 3
.332•210•20	- 4
.137	- 5
.357/1	- 6
.33	- 7
.86/1	- 8

1

4.5

2
):
 " " " "
 () ...): 3 (" "
 4 (" "
 :
 5 ()
 7 6 ()
 8 ()

	.234,233,172,125/1	- 1
.34	241	- 2
	.2	- 3
	.23/1	- 4
	.25	- 5
	.90-82/2 164/2	- 6
	.391/1 197	- 7
	.363/2 34,33/1	- 8

: 5.5

.1

): :

.3 2 (

.4 ():

" "

" "

...):

" "

" "

" "

.5 (: " "

.6

7

8

.9

.85

187/2

- 1

.95

- 2

.210/1

- 3

.2

- 4

.130·207·200·193/1

12/1

- 5

.302·301·171·154·10

- 6

.119

- 7

.104·103/2

- 8

.364

- 9

: **6.5**

1

()

.

² ():

) () () :

(

³

⁴ ():

⁵

⁶ ():

⁷

8

¹⁰

9

.112	- 1
.7	- 2
.460/2	- 3
.130	- 4
.79/1	- 5
.91	- 6
.225/1	- 7
.181/2	191/2 - 8
.272/3	36/3 - 9
.301/1	- 10

3 2 1

: 7.5

4
):
() 5 ()
:
6
7 ():
8 ()

.107

175,159/2 - 1

.34/3 - 2

.238/2, 494,272/1 - 3

.91,90/1 - 4

.30 - 5

.163 - 6

.178 - 7

.248/1 - 8

: **8.5**

²

):

³ (

⁴

()

):

⁵ (

() () ()
()

():
:

⁶

:

()

()

⁷

()

.308/3	- 1
.356/4	- 2
.7	- 3
.17/1	- 4
.177	- 5
..418·247/2 154·105/1	- 6
.12·11·71·428·427 14·13/1	- 7

2

1

3
.

.

)

.⁴ (

.

.

-

-

.421/1 - 1

.292·281/4 - 2

.45·21/2 - 3

.308 - 4

:

):

() .1 ()
() ()

:

):

.21 () ()
() .()
() .()

*

):

.43 (

()

()

):

(

.91

()

()

"

":

()

(.)

(1978)

(1972)

(.)

.2

(1994)

(1977)

.2

(1941)

(1999)

.4

(1966)

(.)

(1400)

.2

(1994)

.3

(1980)

.6

(.)

(.)

(2000)

(1955)

. 1

(1973)

(.)

(1981)

. 1

(.)

(1982)

. 3

(1988)

(.)

. 1

(1986)

(1987)

.8

(.)

.1

(1995)

.1

(2003)

(1978)

(.)

.5

(.)

.1

(2001)

(2002)

.1

(.)

2

(.)

(1969)

.2

(1979)

.2

. (1970)
 (.)
 (1972)
 (.)
 .2
 (1982)
 .1 (1978)
 (1974)
 .3 (2001)
 .5 (.)
 .3 (1980)
 (2002)
 .1
 (.)
 (1981)
 .1
 (1982)
 .2 (.)

(1982)

.2

(2002)

(1980)

)

(1958)

(

(1973)

(1982)

.2

(1984)

(1988)

.1

(1980)

(.)

.2

(1983)

.1

(1999)

(.)

.1

(2002)

(1981)

(.)

(.)

(1995)

.2

(1309)

(2005)

(2006)

.1

(.)

(1996)

.1

(1987)

.2

(1985)

(1984)

(1994)

.30

(1987)

.1

(1983)

.3

(1982)
(1989)
(1985)
.2
(1981)
.1
(1992)
(1985)
.1
(1987)
:
(1987)
.3
(.)
(.)
(2003)
(1989)
.1
(1959)
(1981)
(1981)
.2

(1982)
.2
(1992)
(.)
(2004)
.2
(1980)
.3
(.)